

Anti-Calmegin antibody (180-350) [S0MR] (STJ11103070)

GENERAL INFORMATION

Product Type	Primary antibodies
Applications	WB/IHC-P/IF/ICC/ELISA
Host / Source	Rabbit
Reactivity	Human/Mouse/Rat

PRODUCT PROPERTIES

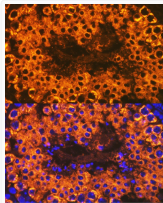
Clonality	Monoclonal
Concentration	Lot specific
Conjugation	Unconjugated
Purification	Affinity purification
Dilution Range	WB:1:500-1:2000 IHC-P:1:50-1:200 IF/ICC:1:50-1:200 ELISA:Recommended starting concentration is 1 Mu g/mL. Please optimize the concentration based on your specific assay requirements.
Formulation	PBS with 0.02% Sodium Azide, 0.05% BSA, 50% Glycerol, pH 7.3.
Isotype	IgG
Molecular Weight	Protein Mw: 70kDa Observed Mw: 70kDa
Storage Instruction	Store at -20°C for up to 1 year from the date of receipt, and avoid repeat freeze-thaw cycles.

TARGET INFORMATION

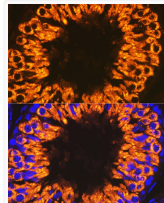
Gene ID	1047
Gene Symbol	CLGN
UniProt ID	CLGN_HUMAN
Immunogen Region	180-350
Immunogen Sequence	FGPDKCGEDYKLFHIFRHHK PKTGVFEEKHAKPPDVLKK FFTDRKTHLYTLVMNPDDTF EVLVDQTVVNGSLLEDVVP PIKPPKEIEDPNDKKPEEWD ERAKIPDPSAVKPEDWDESE PAQIEDSSVVKPAGWLDDPEP KFIPDPNAEKPDWNETDGD EWEAPQILNPA
Specificity	Recombinant fusion protein containing a sequence corresponding to amino acids 180-350 of human Calmegin (O14967).

ADDITIONAL INFORMATION

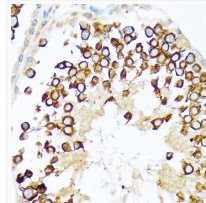
Note STRICTLY FOR FURTHER SCIENTIFIC RESEARCH USE ONLY (RUO). MUST NOT TO BE USED IN DIAGNOSTIC OR THERAPEUTIC APPLICATIONS.



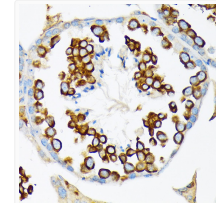
Immunofluorescence analysis of mouse testis cells using Calmegin Rabbit monoclonal antibody (STJ11103070) at dilution of 1:100 (40x lens). Blue: DAPI for nuclear staining.



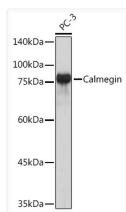
Immunofluorescence analysis of rat testis cells using Calmegin Rabbit monoclonal antibody (STJ11103070) at dilution of 1:100 (40x lens). Blue: DAPI for nuclear staining.



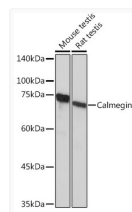
Immunohistochemistry analysis of paraffin-embedded rat testis using Calmegin Rabbit monoclonal antibody (STJ11103070) at dilution of 1:100 (40x lens). Perform microwave antigen retrieval with 10 mM Tris/EDTA buffer pH 9.0 before commencing with immunohistochemistry staining protocol.



Immunohistochemistry analysis of paraffin-embedded mouse testis using Calmegin Rabbit monoclonal antibody (STJ11103070) at dilution of 1:100 (40x lens). Perform microwave antigen retrieval with 10 mM Tris/EDTA buffer pH 9.0 before commencing with immunohistochemistry staining protocol.



Western blot analysis of extracts of PC-3 cells, using Calmegin Rabbit monoclonal antibody (STJ11103070) at 1:1000 dilution. Secondary antibody: HRP Goat Anti-Rabbit IgG (H+L) (STJS000856) at 1:10000 dilution. Lysates/proteins: 25 Mu g per lane. Blocking buffer: 3% nonfat dry milk in TBST. Detection: ECL Basic Kit. Exposure time: 30s.



Western blot analysis of extracts of various cell lines, using Calmegin Rabbit monoclonal antibody (STJ11103070) at 1:1000 dilution. Secondary antibody: HRP Goat Anti-Rabbit IgG (H+L) (STJS000856) at 1:10000 dilution. Lysates/proteins: 25 Mu g per lane. Blocking buffer: 3% nonfat dry milk in TBST. Detection: ECL Basic Kit. Exposure time: 10s.