

Anti-SERCA1/ATP2A1 antibody (900-1001) [S4MR] (STJ11103064)

GENERAL INFORMATION

Product Type	Primary antibodies
Applications	WB/IF/ICC/ELISA
Host / Source	Rabbit
Reactivity	Mouse/Rat

PRODUCT PROPERTIES

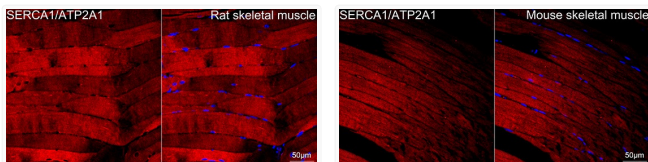
Clonality	Monoclonal
Concentration	Lot specific
Conjugation	Unconjugated
Purification	Affinity purification
Dilution Range	WB:1:500-1:1000 IF/CC:1:50-1:200 ELISA:Recommended starting concentration is 1 Mu g/mL. Please optimize the concentration based on your specific assay requirements.
Formulation	PBS with 0.02% Sodium Azide, 0.05% BSA, 50% Glycerol, pH 7.3.
Isotype	IgG
Molecular Weight	Protein Mw: 95kDa/110kDa Observed Mw: 110kDa
Storage Instruction	Store at -20°C for up to 1 year from the date of receipt, and avoid repeat freeze-thaw cycles.

TARGET INFORMATION

Gene ID	487
Gene Symbol	ATP2A1
UniProt ID	AT2A1_HUMAN
Immunogen Region	900-1001
Immunogen Sequence	ALSVLVTIEMCNALNSLSEN QSLLRMPPWVNIWLLGSICL SMSLHFLILYVDPLPMIFKL RALDLTQWLMVLKISLPVIG LDEILKFVARNYLEDPEDEK RK
Specificity	A synthetic peptide corresponding to a sequence within amino acids 900-1001 of human SERCA1/ATP2A1 (O14983).

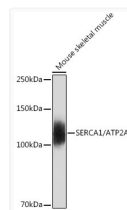
ADDITIONAL INFORMATION

Note STRICTLY FOR FURTHER SCIENTIFIC RESEARCH USE ONLY (RUO). MUST NOT TO BE USED IN DIAGNOSTIC OR THERAPEUTIC APPLICATIONS.



Confocal imaging of paraffin-embedded Rat skeletal muscle tissue using SERCA1/ATP2A1 Rabbit monoclonal antibody (STJ11103064, dilution 1:100) followed by a further incubation with Cy3 Goat Anti-Rabbit IgG (H+L) (dilution 1:500) (Red). DAPI was used for nuclear staining (Blue). High pressure antigen retrieval performed with 0. 01M Citrate Buffer (pH 6. 0) prior to IF staining. Objective: 40x.

Confocal imaging of paraffin-embedded Mouse skeletal muscle tissue using SERCA1/ATP2A1 Rabbit monoclonal antibody (STJ11103064, dilution 1:100) followed by a further incubation with Cy3 Goat Anti-Rabbit IgG (H+L) (dilution 1:500) (Red). DAPI was used for nuclear staining (Blue). High pressure antigen retrieval performed with 0. 01M Citrate Buffer (pH 6. 0) prior to IF staining. Objective: 40x.



Western blot analysis of lysates from Mouse skeletal muscle, using SERCA1/ATP2A1 Rabbit monoclonal antibody (STJ11103064) at 1:500 dilution. Secondary antibody: HRP Goat Anti-Rabbit IgG (H+L) (STJS000856) at 1:10000 dilution. Lysates/proteins: 25 Mu g per lane. Blocking buffer: 3% nonfat dry milk in TBST. Detection: ECL Basic Kit. Exposure time: 30s.