

Anti-ATP1B3 antibody (180-279) [S3MR] (STJ11103063)

GENERAL INFORMATION

Product Type	Primary antibodies
Applications	WB/IHC-P/ELISA
Host / Source	Rabbit
Reactivity	Human/Mouse/Rat

PRODUCT PROPERTIES

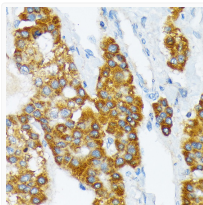
Clonality	Monoclonal
Concentration	Lot specific
Conjugation	Unconjugated
Purification	Affinity purification
Dilution Range	WB:1:500-1:2000 IHC-P:1:50-1:200 ELISA:Recommended starting concentration is 1 Mu g/mL. Please optimize the concentration based on your specific assay requirements.
Formulation	PBS with 0.02% Sodium Azide, 0.05% BSA, 50% Glycerol, pH 7.3.
Isotype	IgG
Molecular Weight	Protein Mw: 22kDa/32kDa Observed Mw: 32-45kDa
Storage Instruction	Store at -20°C for up to 1 year from the date of receipt, and avoid repeat freeze-thaw cycles.

TARGET INFORMATION

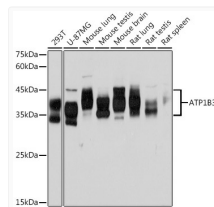
Gene ID	483
Gene Symbol	ATP1B3
UniProt ID	AT1B3_HUMAN
Immunogen Region	180-279
Immunogen Sequence	GLKPEGVPRIDCVSKNEDIP NVAVYPHNGMIDLKYFPYYG KKLHVGYLQPLVAVQVSFAP NNTGKEVTVECKIDGSANLK SQDDRDKFLGRVMFKITARA
Specificity	A synthetic peptide corresponding to a sequence within amino acids 180-279 of human ATP1B3 (P54709).

ADDITIONAL INFORMATION

Note STRICTLY FOR FURTHER SCIENTIFIC RESEARCH USE ONLY (RUO). MUST NOT TO BE USED IN DIAGNOSTIC OR THERAPEUTIC APPLICATIONS.



Immunohistochemistry analysis of ATP1B3 in paraffin-embedded human liver cancer using ATP1B3 Rabbit monoclonal antibody (STJ11103063) at dilution of 1:100 (40x lens). Perform microwave antigen retrieval with 10 mM Tris/EDTA buffer pH 9.0 before commencing with immunohistochemistry staining protocol.



Western blot analysis of various lysates using ATP1B3 Rabbit monoclonal antibody (STJ11103063) at 1:1000 dilution. Secondary antibody: HRP Goat Anti-Rabbit IgG (H+L) (STJS000856) at 1:10000 dilution. Lysates/proteins: 25 Mu g per lane. Blocking buffer: 3% nonfat dry milk in TBST. Detection: ECL Basic Kit. Exposure time: 60s.