

Anti-ABCF1 antibody (746-845) [S7MR] (STJ11103057)

GENERAL INFORMATION

Product Type	Primary antibodies
Applications	WB/IHC-P/ELISA
Host / Source	Rabbit
Reactivity	Human/Rat

PRODUCT PROPERTIES

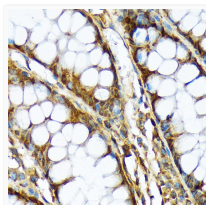
Clonality	Monoclonal
Concentration	Lot specific
Conjugation	Unconjugated
Purification	Affinity purification
Dilution Range	WB:1:500-1:1000 IHC-P:1:50-1:200 ELISA:Recommended starting concentration is 1 μ g/mL. Please optimize the concentration based on your specific assay requirements.
Formulation	PBS with 0.02% Sodium Azide, 0.05% BSA, 50% Glycerol, pH 7.3.
Isotype	IgG
Molecular Weight	Protein Mw: 96kDa Observed Mw: 120kDa
Storage Instruction	Store at -20°C for up to 1 year from the date of receipt, and avoid repeat freeze-thaw cycles.

TARGET INFORMATION

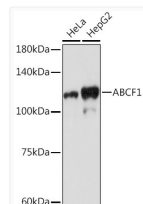
Gene ID	23
Gene Symbol	ABCF1
UniProt ID	ABCF1_HUMAN
Immunogen Region	746-845
Immunogen Sequence	GQKARVVF AELACREPDVLI LDEPTNNLDIESIDALGEAI NEYKGAVIVVSHDARLITET NCQLWVVVEEQSVSQIDGDFE DYKREVLEALGEVMVSRPRE
Specificity	A synthetic peptide corresponding to a sequence within amino acids 746-845 of human ABCF1 (Q8NE71).

ADDITIONAL INFORMATION

Note STRICTLY FOR FURTHER SCIENTIFIC RESEARCH USE ONLY (RUO). MUST NOT TO BE USED IN DIAGNOSTIC OR THERAPEUTIC APPLICATIONS.



Immunohistochemistry analysis of ABCF1 in paraffin-embedded human colon using ABCF1 Rabbit monoclonal antibody (STJ11103057) at dilution of 1:100 (40x lens). Perform microwave antigen retrieval with 10 mM Tris/EDTA buffer pH 9.0 before commencing with immunohistochemistry staining protocol.



Western blot analysis of various lysates using ABCF1 Rabbit monoclonal antibody (STJ11103057) at 1:1000 dilution. Secondary antibody: HRP Goat Anti-Rabbit IgG (H+L) (STJS000856) at 1:10000 dilution. Lysates/proteins: 25 μ g per lane. Blocking buffer: 3% nonfat dry milk in TBST. Detection: ECL Basic Kit. Exposure time: 180s.