

Anti-TGN46/TGOLN2 antibody (1-100) [S6MR] (STJ11103056)

GENERAL INFORMATION

Product Type	Primary antibodies
Applications	WB/IHC-P/IF/ICC/ELISA
Host / Source	Rabbit
Reactivity	Human

PRODUCT PROPERTIES

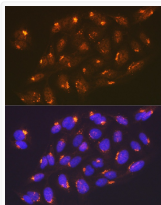
Clonality	Monoclonal
Concentration	Lot specific
Conjugation	Unconjugated
Purification	Affinity purification
Dilution Range	WB:1:1000-1:6000 IHC-P:1:100-1:1000 IF/CC:1:100-1:400 ELISA:Recommended starting concentration is 1 Mu g/mL. Please optimize the concentration based on your specific assay requirements.
Formulation	PBS with 0.02% Sodium Azide, 0.05% BSA, 50% Glycerol, pH 7.3.
Isotype	IgG
Molecular Weight	Protein Mw: 46kDa Observed Mw: 90-100kDa
Storage Instruction	Store at -20°C for up to 1 year from the date of receipt, and avoid repeat freeze-thaw cycles.

TARGET INFORMATION

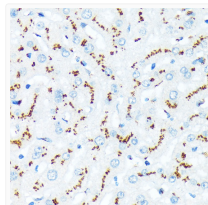
Gene ID	10618
Gene Symbol	TGOLN2
UniProt ID	TGON2_HUMAN
Immunogen Region	1-100
Immunogen Sequence	MRFVVALVLLNVAAGAVPL LATESVKQEEAGVVRPSAGNV STHPSLSQRPGGSKSHPEP QTPKDSPSKSSAEAQTPEDT PNKSGAEAKTQKDSNNKSGA
Specificity	A synthetic peptide corresponding to a sequence within amino acids 1-100 of human TGN46/TGOLN2 (O43493).

ADDITIONAL INFORMATION

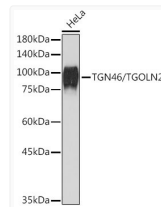
Note **STRICTLY FOR FURTHER SCIENTIFIC RESEARCH USE ONLY (RUO). MUST NOT TO BE USED IN DIAGNOSTIC OR THERAPEUTIC APPLICATIONS.**



Immunofluorescence analysis of U-2 OS cells using TGN46/TGOLN2 Rabbit monoclonal antibody (STJ11103056) at dilution of 1:100 (40x lens). Secondary antibody: Cy3 Goat Anti-Rabbit IgG (H+L) at 1:500 dilution. Blue: DAPI for nuclear staining.



Immunohistochemistry analysis of TGN46/TGOLN2 in paraffin-embedded human liver using TGN46/TGOLN2 Rabbit monoclonal antibody (STJ11103056) at dilution of 1:100 (40x lens). Perform microwave antigen retrieval with 10 mM Tris/EDTA buffer pH 9.0 before commencing with immunohistochemistry staining protocol.



Western blot analysis of lysates from HeLa cells, using TGN46/TGOLN2 Rabbit monoclonal antibody (STJ11103056) at 1:1000 dilution. Secondary antibody: HRP Goat Anti-Rabbit IgG (H+L) (STJS000856) at 1:10000 dilution. Lysates/proteins: 25 Mu g per lane. Blocking buffer: 3% nonfat dry milk in TBST. Detection: ECL Basic Kit. Exposure time: 1s.