

## Anti-Secretagogin antibody (177-276) [S3MR] (STJ11103053)

### GENERAL INFORMATION

Product Type	Primary antibodies
Applications	WB/IHC-P/ELISA
Host / Source	Rabbit
Reactivity	Human/Mouse/Rat

### PRODUCT PROPERTIES

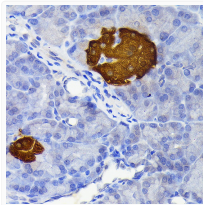
Clonality	Monoclonal
Concentration	Lot specific
Conjugation	Unconjugated
Purification	Affinity purification
Dilution Range	WB:1:500-1:1000 IHC-P:1:50-1:200 ELISA:Recommended starting concentration is 1 $\mu$ g/mL. Please optimize the concentration based on your specific assay requirements.
Formulation	PBS with 0.02% Sodium Azide, 0.05% BSA, 50% Glycerol, pH 7.3.
Isotype	IgG
Molecular Weight	Protein Mw: 32kDa Observed Mw: 32kDa
Storage Instruction	Store at -20°C for up to 1 year from the date of receipt, and avoid repeat freeze-thaw cycles.

### TARGET INFORMATION

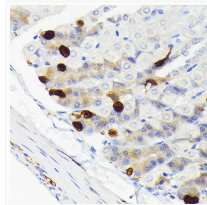
Gene ID	<a href="#">10590</a>
Gene Symbol	<a href="#">SCGN</a>
UniProt ID	<a href="#">SEGN_HUMAN</a>
Immunogen Region	177-276
Immunogen Sequence	ILALQENFLQFKMDACSTE ERKRDFEKIFAYYDVSKTGA LEGPEVDGFGVKDMMELVQPS ISGVDLDFKREILLRHCDVN KDGKIQKSELALCLGLKINP
Specificity	A synthetic peptide corresponding to a sequence within amino acids 177-276 of human Secretagogin (Secretagogin (SCGN) ) (O76038).

### ADDITIONAL INFORMATION

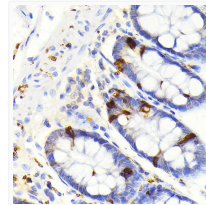
Note STRICTLY FOR FURTHER SCIENTIFIC RESEARCH USE ONLY (RUO). MUST NOT TO BE USED IN DIAGNOSTIC OR THERAPEUTIC APPLICATIONS.



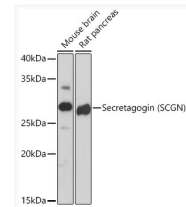
Immunohistochemistry analysis of paraffin-embedded rat pancreatic islet using Secretagogin (Secretagogin (SCGN) ) Rabbit monoclonal antibody (STJ11103053) at dilution of 1:100 (40x lens). Perform microwave antigen retrieval with 10 mM Tris/EDTA buffer pH 9. 0 before commencing with immunohistochemistry staining protocol.



Immunohistochemistry analysis of paraffin-embedded mouse stomach using Secretagogin (Secretagogin (SCGN) ) Rabbit monoclonal antibody (STJ11103053) at dilution of 1:100 (40x lens). Perform microwave antigen retrieval with 10 mM Tris/EDTA buffer pH 9. 0 before commencing with immunohistochemistry staining protocol.



Immunohistochemistry analysis of paraffin-embedded human colon using Secretagogin (Secretagogin (SCGN) ) Rabbit monoclonal antibody (STJ11103053) at dilution of 1:100 (40x lens). Perform microwave antigen retrieval with 10 mM Tris/EDTA buffer pH 9. 0 before commencing with immunohistochemistry staining protocol.



Western blot analysis of extracts of various cell lines, using Secretagogin (Secretagogin (SCGN) ) Rabbit monoclonal antibody (STJ11103053) at 1:1000 dilution. Secondary antibody: HRP Goat Anti-Rabbit IgG (H+L) (STJS000856) at 1:10000 dilution. Lysates/proteins: 25  $\mu$ g per lane. Blocking buffer: 3% nonfat dry milk in TBST. Detection: ECL Basic Kit. Exposure time: 180s.