

Anti-WAVE2/WASF2 antibody (399-498) [S1MR] (STJ11103051)

GENERAL INFORMATION

Product Type	Primary antibodies
Applications	WB/IHC-P/ELISA
Host / Source	Rabbit
Reactivity	Human/Mouse/Rat

PRODUCT PROPERTIES

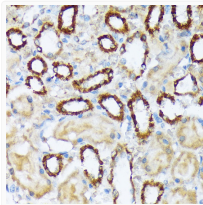
Clonality	Monoclonal
Concentration	Lot specific
Conjugation	Unconjugated
Purification	Affinity purification
Dilution Range	WB:1:500-1:1000 IHC-P:1:50-1:200 ELISA:Recommended starting concentration is 1 µg/mL. Please optimize the concentration based on your specific assay requirements.
Formulation	PBS with 0.02% Sodium Azide, 0.05% BSA, 50% Glycerol, pH 7.3.
Isotype	IgG
Molecular Weight	Protein Mw: 54kDa Observed Mw: 80kDa
Storage Instruction	Store at -20°C for up to 1 year from the date of receipt, and avoid repeat freeze-thaw cycles.

TARGET INFORMATION

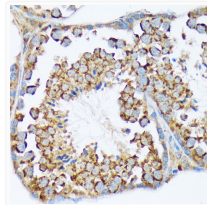
Gene ID	10163
Gene Symbol	WASF2
UniProt ID	WASF2_HUMAN
Immunogen Region	399-498
Immunogen Sequence	PPGPPPPPTGADGQPAIPP PLSDTTKPKSSLPVSDARS DLLSAIRQGFQLRRVEEQRE QEKRDVVGNDVATILSRRIA VEYDSEDDSEFDEDDWSD
Specificity	A synthetic peptide corresponding to a sequence within amino acids 399-498 of human WAVE2/WASF2 (Q9Y6W5).

ADDITIONAL INFORMATION

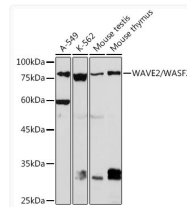
Note STRICTLY FOR FURTHER SCIENTIFIC RESEARCH USE ONLY (RUO). MUST NOT TO BE USED IN DIAGNOSTIC OR THERAPEUTIC APPLICATIONS.



Immunohistochemistry analysis of paraffin-embedded rat kidney using WAVE2/WAVE2/WASF2 Rabbit monoclonal antibody (STJ11103051) at dilution of 1:100 (40x lens). Perform microwave antigen retrieval with 10 mM Tris/EDTA buffer pH 9.0 before commencing with immunohistochemistry staining protocol.



Immunohistochemistry analysis of paraffin-embedded mouse testis using WAVE2/WAVE2/WASF2 Rabbit monoclonal antibody (STJ11103051) at dilution of 1:100 (40x lens). Perform microwave antigen retrieval with 10 mM Tris/EDTA buffer pH 9.0 before commencing with immunohistochemistry staining protocol.



Western blot analysis of extracts of various cell lines, using WAVE2/WAVE2/WASF2 Rabbit monoclonal antibody (STJ11103051) at 1:1000 dilution. Secondary antibody: HRP Goat Anti-Rabbit IgG (H+L) (STJS000856) at 1:10000 dilution. Lysates/proteins: 25 µg per lane. Blocking buffer: 3% nonfat dry milk in TBST. Detection: ECL Basic Kit. Exposure time: 180s.