

Anti-SynGAP antibody (1244-1343) [S3MR] (STJ11103043)

GENERAL INFORMATION

Product Type	Primary antibodies
Applications	WB/ELISA
Host / Source	Rabbit
Reactivity	Human/Mouse/Rat

PRODUCT PROPERTIES

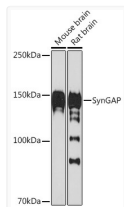
Clonality	Monoclonal
Concentration	Lot specific
Conjugation	Unconjugated
Purification	Affinity purification
Dilution Range	WB:1:500-1:1000 ELISA:Recommended starting concentration is 1 µg/mL. Please optimize the concentration based on your specific assay requirements.
Formulation	PBS with 0.02% Sodium Azide, 0.05% BSA, 50% Glycerol, pH 7.3.
Isotype	IgG
Molecular Weight	Protein Mw: 148kDa Observed Mw: 140kDa
Storage Instruction	Store at -20°C for up to 1 year from the date of receipt, and avoid repeat freeze-thaw cycles.

TARGET INFORMATION

Gene ID	8831
Gene Symbol	SYNGAP1
UniProt ID	SYGP1_HUMAN
Immunogen Region	1244-1343
Immunogen Sequence	SEKRLRQQQAEKDSQIKSII GRMLMVEEELRRDHPAMAEP LPEPKRLLDAQERQLPPLG PTNPRVTLAPPWNGLAPPAP PPPPRLQITENGEFRNTADH
Specificity	A synthetic peptide corresponding to a sequence within amino acids 1244-1343 of human SynGAP (Q96PV0).

ADDITIONAL INFORMATION

Note STRICTLY FOR FURTHER SCIENTIFIC RESEARCH USE ONLY (RUO). MUST NOT TO BE USED IN DIAGNOSTIC OR THERAPEUTIC APPLICATIONS.



Western blot analysis of extracts of various cell lines, using SynGAP Rabbit monoclonal antibody (STJ11103043) at 1:1000 dilution. Secondary antibody: HRP Goat Anti-Rabbit IgG (H+L) (STJS000856) at 1:10000 dilution. Lysates/proteins: 25 µg per lane. Blocking buffer: 3% nonfat dry milk in TBST. Detection: ECL Basic Kit. Exposure time: 60s.