

## Anti-Dysferlin antibody (50-150) [S1MR] (STJ11103041)

### GENERAL INFORMATION

|               |                    |
|---------------|--------------------|
| Product Type  | Primary antibodies |
| Applications  | WB/IHC-P/ELISA     |
| Host / Source | Rabbit             |
| Reactivity    | Human              |

### PRODUCT PROPERTIES

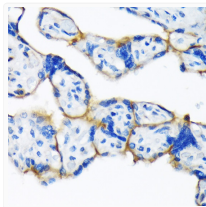
|                     |  |
|---------------------|--|
| Clonality           | Monoclonal   |
| Concentration       | Lot specific   |
| Conjugation         | Unconjugated   |
| Purification        | Affinity purification  |
| Dilution Range      | WB:1:500-1:2000<br>IHC-P:1:50-1:200<br>ELISA:Recommended starting concentration is 1 Mu g/mL. Please optimize the concentration based on your specific assay requirements. |
| Formulation         | PBS with 0.02% Sodium Azide, 0.05% BSA, 50% Glycerol, pH 7.3.  |
| Isotype             | IgG  |
| Molecular Weight    | Protein Mw: 237kDa<br>Observed Mw: 280kDa  |
| Storage Instruction | Store at -20°C for up to 1 year from the date of receipt, and avoid repeat freeze-thaw cycles.   |

### TARGET INFORMATION

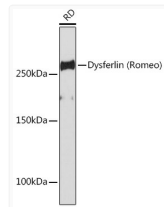
|                    |  |
|--------------------|--|
| Gene ID            | <a href="#">8291</a>   |
| Gene Symbol        | <a href="#">DYSE</a>   |
| UniProt ID         | <a href="#">DYSE_HUMAN</a>   |
| Immunogen Region   | 50-150   |
| Immunogen Sequence | FEWDLKGIPLDQGSELHVVV KDHETMGRNRFGLGEAKVPLR EVLATP SLSASFNAPLLDTK<br>KQPTGASLVLQVSYTPLPGA VPLFPPPTPLEPSPTLPDL D V |
| Specificity        | A synthetic peptide corresponding to a sequence within amino acids 50-150 of human Dysferlin (Romeo) (O75923).   |

### ADDITIONAL INFORMATION

Note STRICTLY FOR FURTHER SCIENTIFIC RESEARCH USE ONLY (RUO). MUST NOT TO BE USED IN DIAGNOSTIC OR THERAPEUTIC APPLICATIONS.



Immunohistochemistry analysis of Dysferlin (Romeo) in paraffin-embedded human placenta using Dysferlin (Romeo) Rabbit monoclonal antibody (STJ11103041) at dilution of 1:100 (40x lens). Perform microwave antigen retrieval with 10 mM Tris/EDTA buffer pH 9.0 before commencing with immunohistochemistry staining protocol.



Western blot analysis of lysates from RD cells, using Dysferlin (Romeo) Rabbit monoclonal antibody (STJ11103041) at 1:1000 dilution. Secondary antibody: HRP Goat Anti-Rabbit IgG (H+L) (STJS000856) at 1:10000 dilution. Lysates/proteins: 25 Mu g per lane. Blocking buffer: 3% nonfat dry milk in TBST. Detection: ECL Basic Kit. Exposure time: 30s.