

Anti-ARID1A antibody (1204-1314) [S0MR] (STJ11103040)

GENERAL INFORMATION

Product Type	Primary antibodies
Applications	WB/IHC-P/IF/ICC/ELISA
Host / Source	Rabbit
Reactivity	Human/Mouse/Rat

PRODUCT PROPERTIES

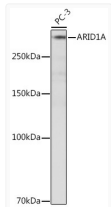
Clonality	Monoclonal
Concentration	Lot specific
Conjugation	Unconjugated
Purification	Affinity purification
Dilution Range	WB:1:500-1:1000 IHC-P:1:50-1:200 IF/CC:1:50-1:200 ELISA:Recommended starting concentration is 1 Mu g/mL. Please optimize the concentration based on your specific assay requirements.
Formulation	PBS with 0.02% Sodium Azide, 0.05% BSA, 50% Glycerol, pH 7.3.
Isotype	IgG
Molecular Weight	Protein Mw: 242kDa Observed Mw: 270kDa
Storage Instruction	Store at -20°C for up to 1 year from the date of receipt, and avoid repeat freeze-thaw cycles.

TARGET INFORMATION

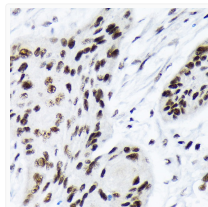
Gene ID	8289
Gene Symbol	ARID1A
UniProt ID	ARI1A_HUMAN
Immunogen Region	1204-1314
Immunogen Sequence	SMTPNPGYQPSMNTSDMMGR MSYEPNKDPYGS MRKAPGSD PFMSSGQGPNNGMGDPYSRA AGPGLGNVAMGPRQHYPYGG PYDRV RTEPGIGPEGNMSTG APQPNLMPSNP
Specificity	Recombinant fusion protein containing a sequence corresponding to amino acids 1204-1314 of human ARID1A (O14497).

ADDITIONAL INFORMATION

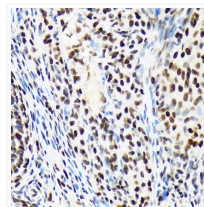
Note **STRICTLY FOR FURTHER SCIENTIFIC RESEARCH USE ONLY (RUO). MUST NOT TO BE USED IN DIAGNOSTIC OR THERAPEUTIC APPLICATIONS.**



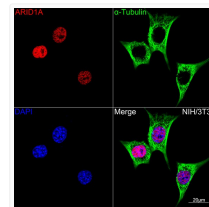
Western blot analysis of extracts of PC-3 cells, using ARID1A rabbit monoclonal antibody (STJ11103040) at 1:500 dilution. Secondary antibody: HRP Goat Anti-rabbit IgG (H+L) (STJS00856) at 1:10000 dilution. Lysates/proteins: 25 Mu g per lane. Blocking buffer: 3% non-fat dry milk in TBST. Detection: ECL Basic Kit. Exposure time: 10s.



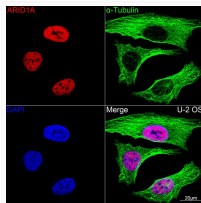
Immunohistochemistry analysis of paraffin-embedded human esophageal cancer using ARID1A rabbit monoclonal antibody (STJ11103040) at dilution of 1:100 (40x lens). Perform microwave antigen retrieval with 10 mM Tris/EDTA buffer pH 9.0 before commencing with immunohistochemistry staining protocol.



Immunohistochemistry analysis of paraffin-embedded rat ovary using ARID1A rabbit monoclonal antibody (STJ11103040) at dilution of 1:100 (40x lens). Perform microwave antigen retrieval with 10 mM Tris/EDTA buffer pH 9.0 before commencing with immunohistochemistry staining protocol.



Confocal imaging of NIH-3T3 cells using ARID1A rabbit monoclonal antibody (STJ11103040, dilution 1:100) (Red). The cells were counterstained with Alpha-Tubulin mouse monoclonal antibody (dilution 1:400) (Green). DAPI was used for nuclear staining (blue). Objective: 100x.



Confocal imaging of U-2 OS cells using ARID1A rabbit monoclonal antibody (STJ11103040, dilution 1:100) (Red). The cells were counterstained with Alpha-Tubulin mouse monoclonal antibody (dilution 1:400) (Green). DAPI was used for nuclear staining (blue). Objective: 100x.