

Anti-Synapsin II antibody (200-300) [S5MR] (STJ11103035)

GENERAL INFORMATION

Product Type	Primary antibodies
Applications	WB/IF/ICC/ELISA
Host / Source	Rabbit
Reactivity	Human/Mouse/Rat

PRODUCT PROPERTIES

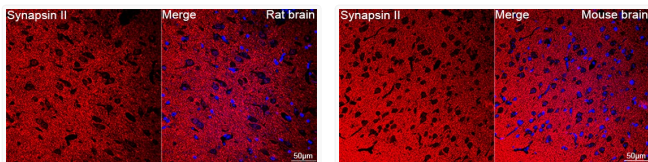
Clonality	Monoclonal
Concentration	Lot specific
Conjugation	Unconjugated
Purification	Affinity purification
Dilution Range	WB:1:1000-1:2000 IF/ICC:1:200-1:800 ELISA:Recommended starting concentration is 1 Mu g/mL. Please optimize the concentration based on your specific assay requirements.
Formulation	PBS with 0.02% Sodium Azide, 0.05% BSA, 50% Glycerol, pH 7.3.
Isotype	IgG
Molecular Weight	Protein Mw: 63kDa Observed Mw: 60kDa
Storage Instruction	Store at -20°C for up to 1 year from the date of receipt, and avoid repeat freeze-thaw cycles.

TARGET INFORMATION

Gene ID	6854
Gene Symbol	SYN2
UniProt ID	SYN2_HUMAN
Immunogen Region	200-300
Immunogen Sequence	HLIIGMQYAGLPSINSLESI YNFCDKPWVFAQLVAIYKTL GGEKFLIEQTYYPNHKEML TLPTFPVVVKIGHAHSGMGK VKVENHYDFQDIASVVALTQ T
Specificity	Recombinant fusion protein containing a sequence corresponding to amino acids 200-300 of human Synapsin II (Q92777).

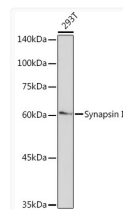
ADDITIONAL INFORMATION

Note STRICTLY FOR FURTHER SCIENTIFIC RESEARCH USE ONLY (RUO). MUST NOT TO BE USED IN DIAGNOSTIC OR THERAPEUTIC APPLICATIONS.



Confocal imaging of paraffin-embedded Rat brain using Synapsin II Rabbit monoclonal antibody (STJ11103035, dilution 1:100) followed by a further incubation with Cy3 Goat Anti-Rabbit IgG (H+L) (dilution 1:500) (Red). DAPI was used for nuclear staining (Blue). Objective: 40x. Perform microwave antigen retrieval with 0. 01 M citrate buffer (pH 6. 0) prior to IF staining.

Confocal imaging of paraffin-embedded Mouse brain using Synapsin II Rabbit monoclonal antibody (STJ11103035, dilution 1:100) followed by a further incubation with Cy3 Goat Anti-Rabbit IgG (H+L) (dilution 1:500) (Red). DAPI was used for nuclear staining (Blue). Objective: 40x. Perform microwave antigen retrieval with 0. 01 M citrate buffer (pH 6. 0) prior to IF staining.



Western blot analysis of lysates from 293T cells, using Synapsin II Rabbit monoclonal antibody (STJ11103035) at 1:1000 dilution. Secondary antibody: HRP Goat Anti-Rabbit IgG (H+L) (STJS000856) at 1:10000 dilution. Lysates/proteins: 25 Mu g per lane. Blocking buffer: 3% nonfat dry milk in TBST. Detection: ECL Basic Kit. Exposure time: 90s.