

Anti-EHMT2 antibody (2-300) [S8MR] (STJ11103018)

GENERAL INFORMATION

Product Type	Primary antibodies
Applications	WB/IHC-P/ELISA
Host / Source	Rabbit
Reactivity	Human/Mouse/Rat

PRODUCT PROPERTIES

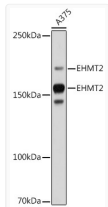
Clonality	Monoclonal
Concentration	Lot specific
Conjugation	Unconjugated
Purification	Affinity purification
Dilution Range	WB:1:500-1:1000 IHC-P:1:50-1:200 ELISA:Recommended starting concentration is 1 Mu g/mL. Please optimize the concentration based on your specific assay requirements.
Formulation	PBS with 0.02% Sodium Azide, 0.05% BSA, 50% Glycerol, pH 7.3.
Isotype	IgG
Molecular Weight	Protein Mw: 132kDa Observed Mw: 160kDa, 180kDa
Storage Instruction	Store at -20°C for up to 1 year from the date of receipt, and avoid repeat freeze-thaw cycles.

TARGET INFORMATION

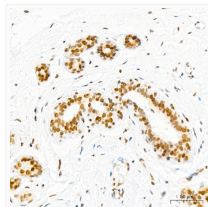
Gene ID	10919
Gene Symbol	EHMT2
UniProt ID	EHMT2_HUMAN
Immunogen Region	2-300
Immunogen Sequence	AAAAGAAAAAAEAGEAPAEM GALLEKETRGATERVHGSL GDTPRSEETLPKATPDSLEP AGPSSPASVTVTYVGDGADT PVGATPLIGDESENLEGGD LRGGRILLGHATKSPSSPS KGGSCPSRAKMSMTGAGKSP PSVQSLAMRLLSMPGAQGA AAGSEPPATTSPGQPKVH RARKTMSKPGNGQPPVPEKR PPEIQHFRMSDDVHSLGKVT SDLAKRRKLNSSGGGLSEEL
Specificity	Recombinant fusion protein containing a sequence corresponding to amino acids 2-300 of human EHMT2 (Q96KQ7).

ADDITIONAL INFORMATION

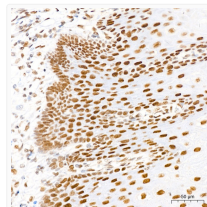
Note STRICTLY FOR FURTHER SCIENTIFIC RESEARCH USE ONLY (RUO). MUST NOT TO BE USED IN DIAGNOSTIC OR THERAPEUTIC APPLICATIONS.



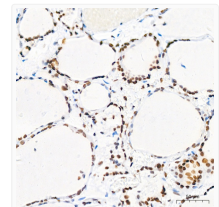
Western blot analysis of extracts of A375 cells, using EHMT2 antibody (STJ11103018) at 1:1000 dilution. Secondary antibody: HRP Goat Anti-rabbit IgG (H+L) (STJS000856) at 1:10000 dilution. Lysates/proteins: 25 Mu g per lane. Blocking buffer: 3% non-fat dry milk in TBST. Detection: ECL Basic Kit. Exposure time: 30s.



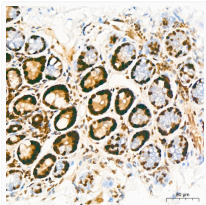
Immunohistochemistry analysis of EHMT2 in paraffin-embedded human breast tissue using EHMT2 rabbit monoclonal antibody (STJ11103018) at a dilution of 1:200 (40x lens). High pressure antigen retrieval was performed with 0.01 M citrate buffer (pH 6.0) prior to immunohistochemistry staining.



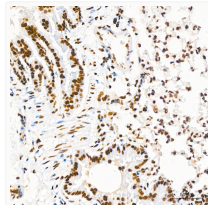
Immunohistochemistry analysis of EHMT2 in paraffin-embedded human esophagus tissue using EHMT2 rabbit monoclonal antibody (STJ11103018) at a dilution of 1:200 (40x lens). High pressure antigen retrieval was performed with 0.01 M citrate buffer (pH 6.0) prior to immunohistochemistry staining.



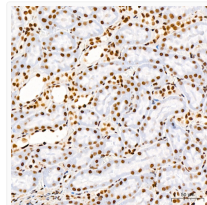
Immunohistochemistry analysis of EHMT2 in paraffin-embedded human thyroid tissue using EHMT2 rabbit monoclonal antibody (STJ11103018) at a dilution of 1:200 (40x lens). High pressure antigen retrieval was performed with 0.01 M citrate buffer (pH 6.0) prior to immunohistochemistry staining.



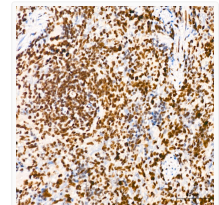
Immunohistochemistry analysis of EHMT2 in paraffin-embedded mouse colon tissue using EHMT2 rabbit monoclonal antibody (STJ11103018) at a dilution of 1:200 (40x lens). High pressure antigen retrieval was performed with 0.01 M citrate buffer (pH 6.0) prior to immunohistochemistry staining.



Immunohistochemistry analysis of EHMT2 in paraffin-embedded mouse lung tissue using EHMT2 rabbit monoclonal antibody (STJ11103018) at a dilution of 1:200 (40x lens). High pressure antigen retrieval was performed with 0.01 M citrate buffer (pH 6.0) prior to immunohistochemistry staining.



Immunohistochemistry analysis of EHMT2 in paraffin-embedded rat kidney tissue using EHMT2 rabbit monoclonal antibody (STJ11103018) at a dilution of 1:200 (40x lens). High pressure antigen retrieval was performed with 0.01 M citrate buffer (pH 6.0) prior to immunohistochemistry staining.



Immunohistochemistry analysis of EHMT2 in paraffin-embedded rat spleen tissue using EHMT2 rabbit monoclonal antibody (STJ11103018) at a dilution of 1:200 (40x lens). High pressure antigen retrieval was performed with 0.01 M citrate buffer (pH 6.0) prior to immunohistochemistry staining.