

## Anti-RCHY1 antibody (160-261) [S7MR] (STJ11103017)

### GENERAL INFORMATION

Product Type	Primary antibodies
Applications	WB/ELISA
Host / Source	Rabbit
Reactivity	Human/Mouse

### PRODUCT PROPERTIES

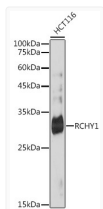
Clonality	Monoclonal
Concentration	Lot specific
Conjugation	Unconjugated
Purification	Affinity purification
Dilution Range	WB:1:500-1:1000 ELISA:Recommended starting concentration is 1 Mu g/mL. Please optimize the concentration based on your specific assay requirements.
Formulation	PBS with 0.02% Sodium Azide, 0.05% BSA, 50% Glycerol, pH 7.3.
Isotype	IgG
Molecular Weight	Protein Mw: 30kDa Observed Mw: 30kDa
Storage Instruction	Store at -20°C for up to 1 year from the date of receipt, and avoid repeat freeze-thaw cycles.

### TARGET INFORMATION

Gene ID	<a href="#">25898</a>
Gene Symbol	<a href="#">RCHY1</a>
UniProt ID	<a href="#">ZN363_HUMAN</a>
Immunogen Region	160-261
Immunogen Sequence	HVLP CGHLLHRTC YEEM LKE GYRCPLCMHSALDMTRYWRQ LDDEVAQT PMPSEYQNMTVD ILCND CNGRSTVQFHILGMK CKICESYNTAQAGGRRISLD QQ
Specificity	Recombinant fusion protein containing a sequence corresponding to amino acids 160-261 of human RCHY1 (Q96PM5).

### ADDITIONAL INFORMATION

Note STRICTLY FOR FURTHER SCIENTIFIC RESEARCH USE ONLY (RUO). MUST NOT TO BE USED IN DIAGNOSTIC OR THERAPEUTIC APPLICATIONS.



Western blot analysis of extracts of HCT116 cells, using RCHY1 antibody (STJ11103017) at 1:1000 dilution. Secondary antibody: HRP Goat Anti-Rabbit IgG (H+L) (STJS000856) at 1:10000 dilution. Lysates/proteins: 25 Mu g per lane. Blocking buffer: 3% nonfat dry milk in TBST. Detection: ECL Basic Kit. Exposure time: 180s.