

## Anti-Cytokeratin 12 antibody (250-494) [S5MR] (STJ11103015)

### GENERAL INFORMATION

Product Type	Primary antibodies
Applications	WB/IHC-P/IF/ICC/ELISA
Host / Source	Rabbit
Reactivity	Mouse/Rat

### PRODUCT PROPERTIES

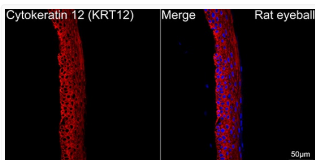
Clonality	Monoclonal
Concentration	Lot specific
Conjugation	Unconjugated
Purification	Affinity purification
Dilution Range	WB:1:100-1:500 IHC-P:1:50-1:200 IF/ICC:1:50-1:200 ELISA:Recommended starting concentration is 1 $\mu$ g/mL. Please optimize the concentration based on your specific assay requirements.
Formulation	PBS with 0.02% Sodium Azide, 0.05% BSA, 50% Glycerol, pH 7.3.
Isotype	IgG
Molecular Weight	Protein Mw: 54kDa Observed Mw: 54kDa
Storage Instruction	Store at -20°C for up to 1 year from the date of receipt, and avoid repeat freeze-thaw cycles.

### TARGET INFORMATION

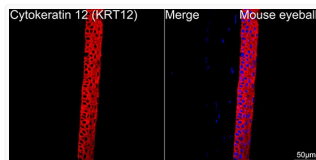
Gene ID	<a href="#">3859</a>
Gene Symbol	<a href="#">KRT12</a>
UniProt ID	<a href="#">K1C12_HUMAN</a>
Immunogen Region	250-494
Immunogen Sequence	EMQIESLNEELAYMKKNHED ELQSFVRVGGPGEVSVEMDAA PGVDLTRLNDMRAQYETIA EQNRKDAEAWFIEKSGELRK EISTNTEQLQSSKSEVTDLR RAFQNLEIELQSQLAMKKSL EDSLAEAGDYCAQLSQVQQ LISNLEAQLLQVRADAERQN VDHQRLNIVKARLELEIETY RRLLDGEAQDGLLEESLFVT DSKSQAQSTDSSKDPKTRK IKTVVQEMVNGEVVSSQVQ
Specificity	Recombinant fusion protein containing a sequence corresponding to amino acids 250-494 of human Cytokeratin 12 (KRT12) (NP_000214.1).

### ADDITIONAL INFORMATION

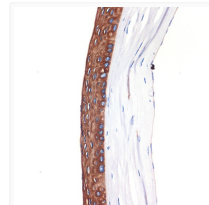
Note STRICTLY FOR FURTHER SCIENTIFIC RESEARCH USE ONLY (RUO). MUST NOT TO BE USED IN DIAGNOSTIC OR THERAPEUTIC APPLICATIONS.



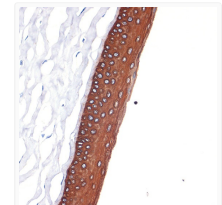
Confocal imaging of paraffin-embedded Rat eyeball tissue using Cytokeratin 12 (KRT12) Rabbit monoclonal antibody (STJ11103015, dilution 1:200) followed by a further incubation with Cy3 Goat Anti-Rabbit IgG (H+L) ( dilution 1:500) (Red). DAPI was used for nuclear staining (Blue). Objective: 40x. Perform high pressure antigen retrieval with 0. 01 M citrate buffer (pH 6. 0) prior to IF staining.



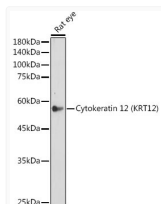
Confocal imaging of paraffin-embedded Mouse eyeball tissue using Cytokeratin 12 (KRT12) Rabbit monoclonal antibody (STJ11103015, dilution 1:200) followed by a further incubation with Cy3 Goat Anti-Rabbit IgG (H+L) ( dilution 1:500) (Red). DAPI was used for nuclear staining (Blue). Objective: 40x. Perform high pressure antigen retrieval with 0. 01 M citrate buffer (pH 6. 0) prior to IF staining.



Immunohistochemistry analysis of Cytokeratin 12 (KRT12) in paraffin-embedded Mouse cornea using Cytokeratin 12 (KRT12) Rabbit monoclonal antibody (STJ11103015) at dilution of 1:100 (40x lens). Perform microwave antigen retrieval with 10 mM Tris/EDTA buffer pH 9. 0 before commencing with immunohistochemistry staining protocol.



Immunohistochemistry analysis of Cytokeratin 12 (KRT12) in paraffin-embedded rat cornea using Cytokeratin 12 (KRT12) Rabbit monoclonal antibody (STJ11103015) at dilution of 1:100 (40x lens). Perform microwave antigen retrieval with 10 mM Tris/EDTA buffer pH 9. 0 before commencing with immunohistochemistry staining protocol.



Western blot analysis of lysates from Rat eye, using Cytokeratin 12 (KRT12) Rabbit monoclonal antibody (STJ11103015) at 1:500 dilution. Secondary antibody: HRP Goat Anti-Rabbit IgG (H+L) (STJS000856) at 1:10000 dilution. Lysates/proteins: 25  $\mu$ g per lane. Blocking buffer: 3% nonfat dry milk in TBST. Detection: ECL Enhanced Kit. Exposure time: 180s.