

Anti-CC2D1A antibody (750-951) [S4MR] (STJ11103014)

GENERAL INFORMATION

Product Type	Primary antibodies
Applications	WB/IHC-P/ELISA
Host / Source	Rabbit
Reactivity	Human/Mouse/Rat

PRODUCT PROPERTIES

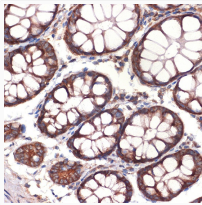
Clonality	Monoclonal
Concentration	Lot specific
Conjugation	Unconjugated
Purification	Affinity purification
Dilution Range	WB:1:500-1:1000 IHC-P:1:50-1:200 ELISA:Recommended starting concentration is 1 µg/mL. Please optimize the concentration based on your specific assay requirements.
Formulation	PBS with 0.02% Sodium Azide, 0.05% BSA, 50% Glycerol, pH 7.3.
Isotype	IgG
Molecular Weight	Protein Mw: 104kDa Observed Mw: 130kDa
Storage Instruction	Store at -20°C for up to 1 year from the date of receipt, and avoid repeat freeze-thaw cycles.

TARGET INFORMATION

Gene ID	54862
Gene Symbol	CC2D1A
UniProt ID	C2D1A_HUMAN
Immunogen Region	750-951
Immunogen Sequence	VLGTAQLKLDALAIACEVRE ILEVLDGRRPTGGRLEVMMVR IREPLTAQQLETTTERWLV DPVPAAVPTQVAGPKGKAPP VPAPARESGNRSARPLHLSL VLAFDQERLERKILALRQAR RPVPPEVAQQYQDIMQRSQW QRAQLEQGGVGIRREYAAQL ERQLQFYTEAARRLGNDSGR DAAKEALYRRNLVESELQRL RR
Specificity	Recombinant fusion protein containing a sequence corresponding to amino acids 750-951 of human CC2D1A (Q6P1N0).

ADDITIONAL INFORMATION

Note	STRICTLY FOR FURTHER SCIENTIFIC RESEARCH USE ONLY (RUO). MUST NOT TO BE USED IN DIAGNOSTIC OR THERAPEUTIC APPLICATIONS.
------	---



Immunohistochemistry analysis of paraffin-embedded human colon using CC2D1A Rabbit monoclonal antibody (STJ11103014) at dilution of 1:100 (40x lens). Perform microwave antigen retrieval with 10 mM Tris/EDTA buffer pH 9.0 before commencing with immunohistochemistry staining protocol.