

Anti-PROK1 antibody (1-105) [S9MR] (STJ11102999)

GENERAL INFORMATION

Product Type	Primary antibodies
Applications	WB/IF/ICC/ELISA
Host / Source	Rabbit
Reactivity	Human/Mouse/Rat

PRODUCT PROPERTIES

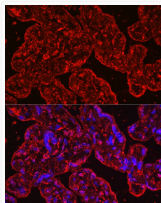
Clonality	Monoclonal
Concentration	Lot specific
Conjugation	Unconjugated
Purification	Affinity purification
Dilution Range	WB:1:500-1:1000 IF/CC:1:50-1:200 ELISA:Recommended starting concentration is 1 Mu g/mL. Please optimize the concentration based on your specific assay requirements.
Formulation	PBS with 0.02% Sodium Azide, 0.05% BSA, 50% Glycerol, pH 7.3.
Isotype	IgG
Molecular Weight	Protein Mw: 12kDa Observed Mw: 14kDa
Storage Instruction	Store at -20°C for up to 1 year from the date of receipt, and avoid repeat freeze-thaw cycles.

TARGET INFORMATION

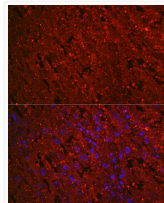
Gene ID	84432
Gene Symbol	PROK1
UniProt ID	PROK1_HUMAN
Immunogen Region	1-105
Immunogen Sequence	MRGATRVSIMLLLVTVSDCA VITGACERDVQCGAGTCCAI SLWLRGLRMCTPLGREGEEC HPGSHKVPFFFRKRKHHTCPC LPNLLCSRFPDGRYRCSMDL KNINF
Specificity	Recombinant fusion protein containing a sequence corresponding to amino acids 1-105 of human PROK1 (P58294).

ADDITIONAL INFORMATION

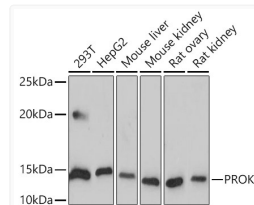
Note STRICTLY FOR FURTHER SCIENTIFIC RESEARCH USE ONLY (RUO). MUST NOT TO BE USED IN DIAGNOSTIC OR THERAPEUTIC APPLICATIONS.



Immunofluorescence analysis of human placenta cells using PROK1 Rabbit monoclonal antibody (STJ11102999) at dilution of 1:100 (40x lens). Blue: DAPI for nuclear staining.



Immunofluorescence analysis of rat placenta cells using PROK1 Rabbit monoclonal antibody (STJ11102999) at dilution of 1:100 (40x lens). Blue: DAPI for nuclear staining.



Western blot analysis of extracts of various cell lines, using PROK1 antibody (STJ11102999) at 1:1000 dilution. Secondary antibody: HRP Goat Anti-Rabbit IgG (H+L) (STJS000856) at 1:10000 dilution. Lysates/proteins: 25 Mu g per lane. Blocking buffer: 3% nonfat dry milk in TBST. Detection: ECL Basic Kit. Exposure time: 180s.