

## Anti-MYH7B antibody (1750-1983) [S8MR] (STJ11102978)

### GENERAL INFORMATION

Product Type	Primary antibodies
Applications	WB/ELISA
Host / Source	Rabbit
Reactivity	Mouse/Rat

### PRODUCT PROPERTIES

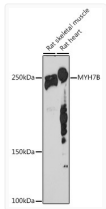
Clonality	Monoclonal
Concentration	Lot specific
Conjugation	Unconjugated
Purification	Affinity purification
Dilution Range	WB:1:500-1:1000 ELISA:Recommended starting concentration is 1 µg/mL. Please optimize the concentration based on your specific assay requirements.
Formulation	PBS with 0.02% Sodium Azide, 0.05% BSA, 50% Glycerol, pH 7.3.
Isotype	IgG
Molecular Weight	Protein Mw: 226kDa Observed Mw: 226kDa
Storage Instruction	Store at -20°C for up to 1 year from the date of receipt, and avoid repeat freeze-thaw cycles.

### TARGET INFORMATION

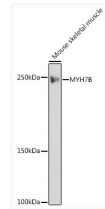
Gene ID	<a href="#">57644</a>
Gene Symbol	<a href="#">MYH7B</a>
UniProt ID	<a href="#">MYH7B_HUMAN</a>
Immunogen Region	1750-1983
Immunogen Sequence	LAEQELLEATERLNNLLHSQN TGLLNQKKKLEADLAQLSGE VEEAAQERREAEKAKKAIT DAAMMAEELKKEQDTSAHLE RMKKTLEQTVRELQARLEEA EQAALRGGKKQVQKLEAKVR ELEAELDAEQKKHAEALGV RKHERRVKELAYQAEEDRKN LARMQDLVDKLQSKVKS YKR QFEAEQQANTNLAKYRKAQ HELDDAEERADMAETQANKL RARTRDALGPKHKE
Specificity	Recombinant fusion protein containing a sequence corresponding to amino acids 1750-1983 of human MYH7B (NP_065935.3).

### ADDITIONAL INFORMATION

Note **STRICTLY FOR FURTHER SCIENTIFIC RESEARCH USE ONLY (RUO). MUST NOT TO BE USED IN DIAGNOSTIC OR THERAPEUTIC APPLICATIONS.**



Western blot analysis of extracts of various cell lines, using MYH7B antibody (STJ11102978) at 1:1000 dilution. Secondary antibody: HRP Goat Anti-Rabbit IgG (H+L) (STJS000856) at 1:10000 dilution. Lysates/proteins: 25 µg per lane. Blocking buffer: 3% nonfat dry milk in TBST. Detection: ECL Basic Kit. Exposure time: 180s.



Western blot analysis of extracts of Mouse skeletal muscle, using MYH7B antibody (STJ11102978) at 1:1000 dilution. Secondary antibody: HRP Goat Anti-Rabbit IgG (H+L) (STJS000856) at 1:10000 dilution. Lysates/proteins: 25 µg per lane. Blocking buffer: 3% nonfat dry milk in TBST. Detection: ECL Basic Kit. Exposure time: 1s.