

Anti-SUPT5H/SPT5 antibody (800-900) [S7MR] (STJ11102957)

GENERAL INFORMATION

Product Type	Primary antibodies
Applications	WB/IHC-P/IF/ICC/ELISA
Host / Source	Rabbit
Reactivity	Human/Mouse/Rat

PRODUCT PROPERTIES

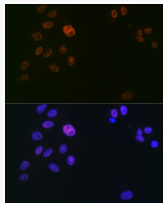
Clonality	Monoclonal
Concentration	Lot specific
Conjugation	Unconjugated
Purification	Affinity purification
Dilution Range	WB:1:500-1:1000 IHC-P:1:50-1:200 IF/CC:1:50-1:200 ELISA:Recommended starting concentration is 1 μ g/mL. Please optimize the concentration based on your specific assay requirements.
Formulation	PBS with 0.02% Sodium Azide, 0.05% BSA, 50% Glycerol, pH 7.3.
Isotype	IgG
Molecular Weight	Protein Mw: 121kDa Observed Mw: 150kDa
Storage Instruction	Store at -20°C for up to 1 year from the date of receipt, and avoid repeat freeze-thaw cycles.

TARGET INFORMATION

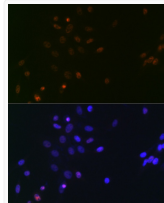
Gene ID	6829
Gene Symbol	SUPT5H
UniProt ID	SPT5H_HUMAN
Immunogen Region	800-900
Immunogen Sequence	PHYGSQTPLHDGSRTPAQSG AWDPNPNTPSRAEEYEA FDDEPTSPQAYGGTNPQQT PGYPDPSSQVNPQYNPQTP GTPAMYNTDQFSPYAAPSPQ G
Specificity	A synthetic peptide corresponding to a sequence within amino acids 800-900 of human SUPT5H/SPT5 (O00267).

ADDITIONAL INFORMATION

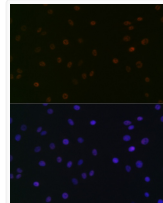
Note STRICTLY FOR FURTHER SCIENTIFIC RESEARCH USE ONLY (RUO). MUST NOT TO BE USED IN DIAGNOSTIC OR THERAPEUTIC APPLICATIONS.



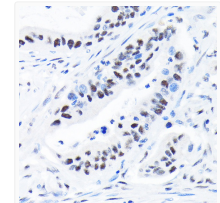
Immunofluorescence analysis of U2OS cells using SUPT5H/SPT5 Rabbit monoclonal antibody (STJ11102957) at dilution of 1:100 (40x lens). Blue: DAPI for nuclear staining.



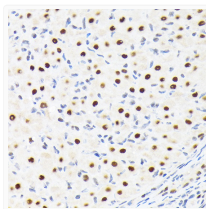
Immunofluorescence analysis of NIH/3T3 cells using SUPT5H/SPT5 Rabbit monoclonal antibody (STJ11102957) at dilution of 1:100 (40x lens). Blue: DAPI for nuclear staining.



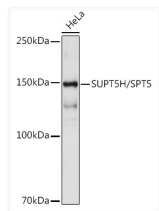
Immunofluorescence analysis of C6 cells using SUPT5H/SPT5 Rabbit monoclonal antibody (STJ11102957) at dilution of 1:100 (40x lens). Blue: DAPI for nuclear staining.



Immunohistochemistry analysis of paraffin-embedded human colon carcinoma using SUPT5H/SPT5 Rabbit monoclonal antibody (STJ11102957) at dilution of 1:100 (40x lens). Perform microwave antigen retrieval with 10 mM Tris/EDTA buffer pH 9.0 before commencing with immunohistochemistry staining protocol.



Immunohistochemistry analysis of paraffin-embedded rat ovary using SUPT5H/SPT5 Rabbit monoclonal antibody (STJ11102957) at dilution of 1:100 (40x lens). Perform microwave antigen retrieval with 10 mM Tris/EDTA buffer pH 9.0 before commencing with immunohistochemistry staining protocol.



Western blot analysis of extracts of HeLa cells, using SUPT5H/SPT5 antibody (STJ11102957) at 1:1000 dilution. Secondary antibody: HRP Goat Anti-Rabbit IgG (H+L) (STJS000856) at 1:10000 dilution. Lysates/proteins: 25 μ g per lane. Blocking buffer: 3% nonfat dry milk in TBST. Detection: ECL Basic Kit. Exposure time: 10s.