

Anti-PKA C-alpha antibody [S0MR] (STJ11102940)

GENERAL INFORMATION

Product Type	Primary antibodies
Applications	WB/IF/ICC/ELISA
Host / Source	Mouse
Reactivity	Human/Mouse/Rat

PRODUCT PROPERTIES

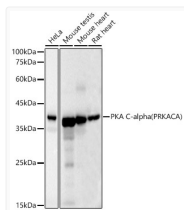
Clonality	Monoclonal
Concentration	Lot specific
Conjugation	Unconjugated
Purification	Affinity purification
Dilution Range	WB:1:10000-1:40000 IF/CC:1:50-1:200 ELISA:Recommended starting concentration is 1 Mu g/mL. Please optimize the concentration based on your specific assay requirements.
Formulation	PBS with 0.05% Proclin300, 50% Glycerol, pH7.3.
Isotype	IgG2Bk
Molecular Weight	Protein Mw: 41kDa Observed Mw: 40kDa
Storage Instruction	Store at -20°C for up to 1 year from the date of receipt, and avoid repeat freeze-thaw cycles.

TARGET INFORMATION

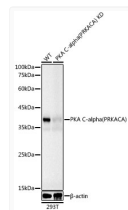
Gene ID	5566
Gene Symbol	PRKACA
UniProt ID	KAPCA_HUMAN
Specificity	Recombinant protein of human [KD Validated] PKA C-alpha (PRKACA).

ADDITIONAL INFORMATION

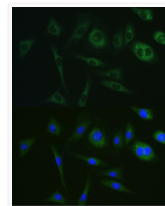
Note STRICTLY FOR FURTHER SCIENTIFIC RESEARCH USE ONLY (RUO). MUST NOT TO BE USED IN DIAGNOSTIC OR THERAPEUTIC APPLICATIONS.



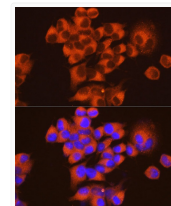
Western blot analysis of various lysates, using PKA C-alpha (PRKACA) antibody (STJ11102940) at 1:10000 dilution. Secondary antibody: HRP Goat Anti-mouse IgG (H+L) (STJS000854) at 1:10000 dilution. Lysates/proteins: 25 Mu g per lane. Blocking buffer: 3% non-fat dry milk in TBST. Detection: ECL Basic Kit. Exposure time: 20s.



Western blot analysis of extracts from wild type (WT) and PKA C-alpha (PRKACA) knockdown (KD) 293T (KD) cells, using PKA C-alpha (PRKACA) antibody (STJ11102940) at 1:10000 dilution. Secondary antibody: HRP Goat Anti-mouse IgG (H+L) (STJS000854) at 1:10000 dilution. Lysates/proteins: 25 Mu g per lane. Blocking buffer: 3% non-fat dry milk in TBST. Detection: ECL Basic Kit. Exposure time: 20s.



Immunofluorescence analysis of BALB-3T3 cells using [KD Validated] PKA C-alpha (PRKACA) mouse monoclonal antibody (STJ11102940) at dilution of 1:100 (40x lens). Blue: DAPI for nuclear staining.



Immunofluorescence analysis of MCF7 cells using [KD Validated] PKA C-alpha (PRKACA) mouse monoclonal antibody (STJ11102940) at dilution of 1:100 (40x lens). Blue: DAPI for nuclear staining.