

## Anti-COG1 antibody (835-935) (STJ11102919)

### GENERAL INFORMATION

Product Type	Primary antibodies
Applications	WB/IHC-P/ELISA
Host / Source	Rabbit
Reactivity	Human/Mouse/Rat

### PRODUCT PROPERTIES

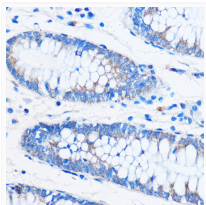
Clonality	Polyclonal
Concentration	Lot specific
Conjugation	Unconjugated
Purification	Affinity purification
Dilution Range	WB:1:500-1:2000 IHC-P:1:50-1:200 ELISA:Recommended starting concentration is 1 µg/mL. Please optimize the concentration based on your specific assay requirements.
Formulation	PBS with 0.01% Thimerosal, 50% Glycerol, pH 7.3.
Isotype	IgG
Molecular Weight	Protein Mw: 109kDa Observed Mw: 109kDa
Storage Instruction	Store at -20°C for up to 1 year from the date of receipt, and avoid repeat freeze-thaw cycles.

### TARGET INFORMATION

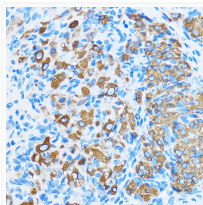
Gene ID	<a href="#">9382</a>
Gene Symbol	<a href="#">COG1</a>
UniProt ID	<a href="#">COG1_HUMAN</a>
Immunogen Region	835-935
Immunogen Sequence	DSRIEKVTDHLEALIDPFDL DVFTPHLNSNLHRLVQRTSV LFGLVTGTENQLAPRSSTFN SQEPHNILPLASSQIRFGLL PLSMTSTRKAKSTRNIETKA Q
Specificity	A synthetic peptide corresponding to a sequence within amino acids 835-935 of human COG1 (NP_061184.1).

### ADDITIONAL INFORMATION

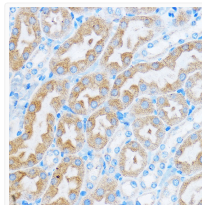
Note **STRICTLY FOR FURTHER SCIENTIFIC RESEARCH USE ONLY (RUO). MUST NOT TO BE USED IN DIAGNOSTIC OR THERAPEUTIC APPLICATIONS.**



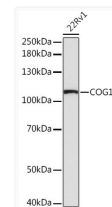
Immunohistochemistry analysis of COG1 in paraffin-embedded Human colon using COG1 Rabbit polyclonal antibody (STJ11102919) at dilution of 1:50 (40x lens). Perform microwave antigen retrieval with 10 mM PBS buffer pH 7.2 before commencing with immunohistochemistry staining protocol.



Immunohistochemistry analysis of COG1 in paraffin-embedded Rat ovary using COG1 Rabbit polyclonal antibody (STJ11102919) at dilution of 1:50 (40x lens). Perform microwave antigen retrieval with 10 mM PBS buffer pH 7.2 before commencing with immunohistochemistry staining protocol.



Immunohistochemistry analysis of COG1 in paraffin-embedded Mouse kidney using COG1 Rabbit polyclonal antibody (STJ11102919) at dilution of 1:50 (40x lens). Perform microwave antigen retrieval with 10 mM PBS buffer pH 7.2 before commencing with immunohistochemistry staining protocol.



Western blot analysis of lysates from 22Rv1 cells, using COG1 Rabbit polyclonal antibody (STJ11102919) at 1:1000 dilution. Secondary antibody: HRP Goat Anti-Rabbit IgG (H+L) (STJS000856) at 1:10000 dilution. Lysates/proteins: 25 µg per lane. Blocking buffer: 3% nonfat dry milk in TBST. Detection: ECL Basic Kit. Exposure time: 90s.