

## Anti-Casein Kinase 2 beta antibody (1-215) (STJ11102908)

### GENERAL INFORMATION

Product Type	Primary antibodies
Applications	WB/IHC-P/ELISA
Host / Source	Rabbit
Reactivity	Human/Mouse/Rat

### PRODUCT PROPERTIES

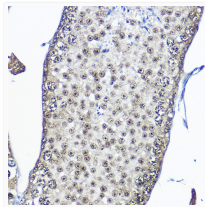
Clonality	Polyclonal
Concentration	Lot specific
Conjugation	Unconjugated
Purification	Affinity purification
Dilution Range	WB:1:500-1:2000 IHC-P:1:50-1:200 ELISA:Recommended starting concentration is 1 Mu g/mL. Please optimize the concentration based on your specific assay requirements.
Formulation	PBS with 0.02% Sodium Azide, 50% Glycerol, pH 7.3.
Isotype	IgG
Molecular Weight	Protein Mw: 25kDa Observed Mw: 25kDa
Storage Instruction	Store at -20°C for up to 1 year from the date of receipt, and avoid repeat freeze-thaw cycles.

### TARGET INFORMATION

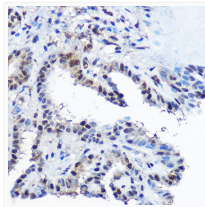
Gene ID	<a href="#">1460</a>
Gene Symbol	<a href="#">CSNK2B</a>
UniProt ID	<a href="#">CSK2B_HUMAN</a>
Immunogen Region	1-215
Immunogen Sequence	MSSSEEVSWISWFCGLRGNE FFCEVDEDEDYIQDKFNLTGLN EQVPHYRQALDMILDLEPDE ELEDNPNQSDLIEQAAEMLY GLIHARYILTNRGIAQMLEK YQQGDFGYCPRVYGENQPML PIGLSDIPGEAMVKLYCPKC MDVYTPKSSRHHTDGAYFG TGFPHMLFMVHPEYRPKRPA NQFVPRLYGFKIHPMAYQLQ LQAASNFKSPVKTIK
Specificity	Recombinant fusion protein containing a sequence corresponding to amino acids 1-215 of human Casein Kinase 2 beta (CSNK2B) (NP_001311.3).

### ADDITIONAL INFORMATION

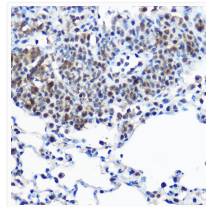
Note STRICTLY FOR FURTHER SCIENTIFIC RESEARCH USE ONLY (RUO). MUST NOT TO BE USED IN DIAGNOSTIC OR THERAPEUTIC APPLICATIONS.



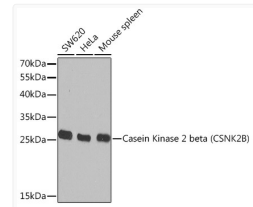
Immunohistochemistry analysis of Casein Kinase 2 beta (CSNK2B) in paraffin-embedded mouse testis using Casein Kinase 2 beta (Casein Kinase 2 beta (CSNK2B) ) Rabbit polyclonal antibody (STJ11102908) at dilution of 1:100 (40x lens). Perform high pressure antigen retrieval with 10 mM citrate buffer pH 6. 0 before commencing with immunohistochemistry staining protocol.



Immunohistochemistry analysis of Casein Kinase 2 beta (CSNK2B) in paraffin-embedded human thyroid cancer using Casein Kinase 2 beta (Casein Kinase 2 beta (CSNK2B) ) Rabbit polyclonal antibody (STJ11102908) at dilution of 1:100 (40x lens). Perform high pressure antigen retrieval with 10 mM citrate buffer pH 6. 0 before commencing with immunohistochemistry staining protocol.



Immunohistochemistry analysis of Casein Kinase 2 beta (CSNK2B) in paraffin-embedded rat lung using Casein Kinase 2 beta (Casein Kinase 2 beta (CSNK2B) ) Rabbit polyclonal antibody (STJ11102908) at dilution of 1:100 (40x lens). Perform high pressure antigen retrieval with 10 mM citrate buffer pH 6. 0 before commencing with immunohistochemistry staining protocol.



Western blot analysis of various lysates using Casein Kinase 2 beta (Casein Kinase 2 beta (CSNK2B) ) Rabbit polyclonal antibody (STJ11102908) at 1:1000 dilution. Secondary antibody: HRP Goat Anti-Rabbit IgG (H+L) (STJS000856) at 1:10000 dilution. Lysates/proteins: 25 Mu g per lane. Blocking buffer: 3% nonfat dry milk in TBST. Detection: ECL Basic Kit. Exposure time: 30s.