

Anti-Casein Kinase 2 alpha antibody (1-391) (STJ11102907)

GENERAL INFORMATION

Product Type	Primary antibodies
Applications	WB/IHC-P/IF/ICC/ELISA
Host / Source	Rabbit
Reactivity	Human/Mouse/Rat

PRODUCT PROPERTIES

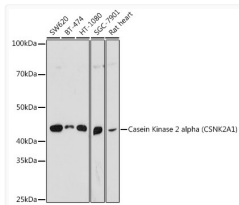
Clonality	Polyclonal
Concentration	Lot specific
Conjugation	Unconjugated
Purification	Affinity purification
Dilution Range	WB:1:500-1:2000 IHC-P:1:50-1:200 IF/ICC:1:50-1:200 ELISA:Recommended starting concentration is 1 Mu g/mL. Please optimize the concentration based on your specific assay requirements.
Formulation	PBS with 0.02% Sodium Azide, 50% Glycerol, pH 7.3.
Isotype	IgG
Molecular Weight	Protein Mw: 45kDa Observed Mw: 45kDa
Storage Instruction	Store at -20°C for up to 1 year from the date of receipt, and avoid repeat freeze-thaw cycles.

TARGET INFORMATION

Gene ID	1457
Gene Symbol	CSNK2A1
UniProt ID	CSK21_HUMAN
Immunogen Region	1-391
Immunogen Sequence	MSGPVPSPRARVYTDVNTHRP REYWDYESHVVEWGNQDDYQ LVRKLGKRGKYSEVFEAINIT NNEKVVVKILKPKVKKKKIKR EIKILENLRGGPNIITLADI VKDPVSRTPALVFEHVNNTD FKQLYQTLTDYDIRFYMYEI LKALDYCHSMGIMHRDVKPH NVMIDHEHRKLRLLIDWGLAE FYHPGQEYNVRVASRYFKGP ELLVDYQMYDYSLDMWLSGC MLASMIFRKEPFFHGHNDNY
Specificity	Recombinant fusion protein containing a sequence corresponding to amino acids 1-391 of human Casein Kinase 2 alpha (CSNK2A1) (NP_001886.1).

ADDITIONAL INFORMATION

Note STRICTLY FOR FURTHER SCIENTIFIC RESEARCH USE ONLY (RUO). MUST NOT TO BE USED IN DIAGNOSTIC OR THERAPEUTIC APPLICATIONS.



Western blot analysis of extracts of various cell lines, using Casein Kinase 2 alpha (CSNK2A1) Rabbit polyclonal antibody (STJ11102907) at 1:1000 dilution. Secondary antibody: HRP Goat Anti-Rabbit IgG (H+L) (STJS000856) at 1:10000 dilution. Lysates/proteins: 25 Mu g per lane. Blocking buffer: 3% nonfat dry milk in TBST. Detection: ECL Basic Kit. Exposure time: 10s.