

Anti-PDE12 antibody (17-300) (STJ11102898)

GENERAL INFORMATION

Product Type	Primary antibodies
Applications	WB/IF/ICC/ELISA
Host / Source	Rabbit
Reactivity	Mouse/Rat

PRODUCT PROPERTIES

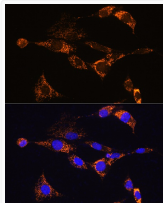
Clonality	Polyclonal
Concentration	Lot specific
Conjugation	Unconjugated
Purification	Affinity purification
Dilution Range	WB:1:500-1:2000 IF/CC:1:50-1:200 ELISA:Recommended starting concentration is 1 μ g/mL. Please optimize the concentration based on your specific assay requirements.
Formulation	PBS with 0.01% Thimerosal, 50% Glycerol, pH 7.3.
Isotype	IgG
Molecular Weight	Protein Mw: 67kDa Observed Mw: 67kDa
Storage Instruction	Store at -20°C for up to 1 year from the date of receipt, and avoid repeat freeze-thaw cycles.

TARGET INFORMATION

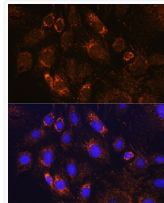
Gene ID	201626
Gene Symbol	PDE12
UniProt ID	PDE12_HUMAN
Immunogen Region	17-300
Immunogen Sequence	AVEKLSRAEAGSQTAAGAME RAVVRCVPSEPKLSLSFALA DGSHKNMQRDQSEPLGRVLS RIATNALKGHAKAAAAKKSR KSRPNASGGAACSGPGPEPA VFCEPVVKLYYREEVAEDV LNVDAWQDGAVLQIGDVKYK VERNPPAFTELQLPRYIMAG FVCPKLSLEFGDPASSLFR WYKEAKPGAAEPEVGVPSL SPSSPSSSWTETDVEERVYT PSNADIGLRLKLHCTPGDG
Specificity	Recombinant fusion protein containing a sequence corresponding to amino acids 17-300 of human PDE12 (NP_001309106.1).

ADDITIONAL INFORMATION

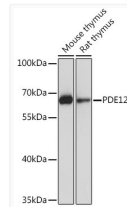
Note **STRICTLY FOR FURTHER SCIENTIFIC RESEARCH USE ONLY (RUO). MUST NOT TO BE USED IN DIAGNOSTIC OR THERAPEUTIC APPLICATIONS.**



Immunofluorescence analysis of NIH/3T3 cells using PDE12 Rabbit polyclonal antibody (STJ11102898) at dilution of 1:100. Secondary antibody: Cy3 Goat Anti-Rabbit IgG (H+L) at 1:500 dilution. Blue: DAPI for nuclear staining.



Immunofluorescence analysis of C6 cells using PDE12 Rabbit polyclonal antibody (STJ11102898) at dilution of 1:100. Secondary antibody: Cy3 Goat Anti-Rabbit IgG (H+L) at 1:500 dilution. Blue: DAPI for nuclear staining.



Western blot analysis of various lysates using PDE12 Rabbit polyclonal antibody (STJ11102898) at 1:1000 dilution. Secondary antibody: HRP Goat Anti-Rabbit IgG (H+L) (STJS000856) at 1:10000 dilution. Lysates/proteins: 25 μ g per lane. Blocking buffer: 3% nonfat dry milk in TBST. Detection: ECL Basic Kit. Exposure time: 10s.