

## Anti-NXN antibody (100-280) (STJ11102879)

### GENERAL INFORMATION

|               |                    |
|---------------|--------------------|
| Product Type  | Primary antibodies |
| Applications  | WB/IF/ICC/ELISA    |
| Host / Source | Rabbit             |
| Reactivity    | Human/Mouse/Rat    |

### PRODUCT PROPERTIES

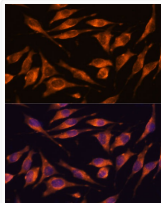
|                     |  |
|---------------------|--|
| Clonality           | Polyclonal   |
| Concentration       | Lot specific   |
| Conjugation         | Unconjugated   |
| Purification        | Affinity purification  |
| Dilution Range      | WB:1:500-1:2000<br>IF/CC:1:50-1:200<br>ELISA:Recommended starting concentration is 1 Mu g/mL. Please optimize the concentration based on your specific assay requirements. |
| Formulation         | PBS with 0.01% Thimerosal, 50% Glycerol, pH 7.3.   |
| Isotype             | IgG  |
| Molecular Weight    | Protein Mw: 48kDa<br>Observed Mw: 48kDa  |
| Storage Instruction | Store at -20°C for up to 1 year from the date of receipt, and avoid repeat freeze-thaw cycles.   |

### TARGET INFORMATION

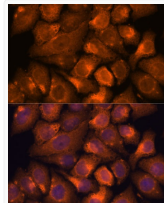
|                    |   |
|--------------------|---|
| Gene ID            | <a href="#">64359</a>   |
| Gene Symbol        | <a href="#">NXN</a>   |
| UniProt ID         | <a href="#">NXN_HUMAN</a>   |
| Immunogen Region   | 100-280   |
| Immunogen Sequence | CRSLTRVLVESYRKIKEAGQ NFEIIFVSADRSEESFKQYF SEMPWLAVPYTDEARRSRLN<br>RLYGIQGIPTLIMLDPQGEV ITRQGRVEVLNDEDCREFPW HPKPVLELSDSNAAQLNEGP<br>CLVLFVDSSEDDGESEAAKQL IQPIAEKIIAKYKAKKEEAP LLFFVAGEDDMTDSLDRDYN L |
| Specificity        | Recombinant fusion protein containing a sequence corresponding to amino acids 100-280 of human NXN (NP_001192248.1).  |

### ADDITIONAL INFORMATION

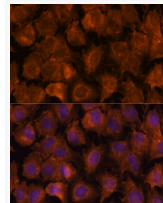
Note **STRICTLY FOR FURTHER SCIENTIFIC RESEARCH USE ONLY (RUO). MUST NOT TO BE USED IN DIAGNOSTIC OR THERAPEUTIC APPLICATIONS.**



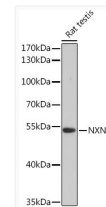
Immunofluorescence analysis of L929 cells using NXN Rabbit polyclonal antibody (STJ11102879) at dilution of 1:100. Secondary antibody: Cy3 Goat Anti-Rabbit IgG (H+L) at 1:500 dilution. Blue: DAPI for nuclear staining.



Immunofluorescence analysis of HeLa cells using NXN Rabbit polyclonal antibody (STJ11102879) at dilution of 1:100. Secondary antibody: Cy3 Goat Anti-Rabbit IgG (H+L) at 1:500 dilution. Blue: DAPI for nuclear staining.



Immunofluorescence analysis of C6 cells using NXN Rabbit polyclonal antibody (STJ11102879) at dilution of 1:100. Secondary antibody: Cy3 Goat Anti-Rabbit IgG (H+L) at 1:500 dilution. Blue: DAPI for nuclear staining.



Western blot analysis of lysates from Rat testis, using NXN Rabbit polyclonal antibody (STJ11102879) at 1:3000 dilution. Secondary antibody: HRP Goat Anti-Rabbit IgG (H+L) (STJS000856) at 1:10000 dilution. Lysates/proteins: 25 Mu g per lane. Blocking buffer: 3% nonfat dry milk in TBST. Detection: ECL Basic Kit. Exposure time: 90s.