

Anti-STX17 antibody (1-130) (STJ11102869)

GENERAL INFORMATION

Product Type	Primary antibodies
Applications	WB/IF/ICC/ELISA
Host / Source	Rabbit
Reactivity	Human/Mouse

PRODUCT PROPERTIES

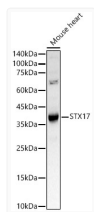
Clonality	Polyclonal
Concentration	Lot specific
Conjugation	Unconjugated
Purification	Affinity purification
Dilution Range	WB:1:500-1:1000 IF/CC:1:50-1:200 ELISA:Recommended starting concentration is 1 μ g/mL. Please optimize the concentration based on your specific assay requirements.
Formulation	PBS with 0.05% Proclin300, 50% Glycerol, pH 7.3.
Isotype	IgG
Molecular Weight	Protein Mw: 33kDa Observed Mw: 37kDa
Storage Instruction	Store at -20°C for up to 1 year from the date of receipt, and avoid repeat freeze-thaw cycles.

TARGET INFORMATION

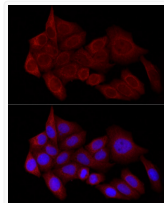
Gene ID	55014
Gene Symbol	STX17
UniProt ID	STX17_HUMAN
Immunogen Region	1-130
Immunogen Sequence	MSEDEEKVKLRRLEPAIQKF IKIVIPTDLERLRKHHQINIE KYQRCRIWDKLHEEHINAGR TVQQLRSNIREIEKLCCLKVR KDDLVLKRMIDPVKEEASA ATAFLQLHLSVEELKKQF NDEETLLQPP
Specificity	Recombinant fusion protein containing a sequence corresponding to amino acids 1-130 of human STX17 (NP_060389.2).

ADDITIONAL INFORMATION

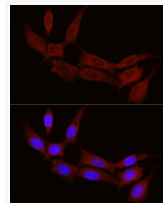
Note STRICTLY FOR FURTHER SCIENTIFIC RESEARCH USE ONLY (RUO). MUST NOT TO BE USED IN DIAGNOSTIC OR THERAPEUTIC APPLICATIONS.



Western blot analysis of mouse heart, using STX17 antibody (STJ11102869) at 1:1000 dilution. Secondary antibody: HRP Goat Anti-rabbit IgG (H+L) (STJS000856) at 1:10000 dilution. Lysates/proteins: 25 μ g per lane. Blocking buffer: 3% non-fat dry milk in TBST. Detection: ECL Basic Kit. Exposure time: 30s.



Immunofluorescence analysis of HeLa cells using STX17 rabbit polyclonal antibody (STJ11102869) at dilution of 1:100 (40x lens). Blue: DAPI for nuclear staining.



Immunofluorescence analysis of NIH/3T3 cells using STX17 rabbit polyclonal antibody (STJ11102869) at dilution of 1:100 (40x lens). Blue: DAPI for nuclear staining.