

Anti-CYB5R1 antibody (1-305) (STJ11102866)

GENERAL INFORMATION

Product Type	Primary antibodies
Applications	WB/IHC-P/ELISA
Host / Source	Rabbit
Reactivity	Human/Rat

PRODUCT PROPERTIES

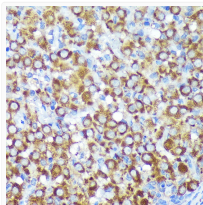
Clonality	Polyclonal
Concentration	Lot specific
Conjugation	Unconjugated
Purification	Affinity purification
Dilution Range	WB:1:500-1:2000 IHC-P:1:50-1:200 ELISA:Recommended starting concentration is 1 Mu g/mL. Please optimize the concentration based on your specific assay requirements.
Formulation	PBS with 0.01% Thimerosal, 50% Glycerol, pH 7.3.
Isotype	IgG
Molecular Weight	Protein Mw: 34kDa Observed Mw: 34kDa
Storage Instruction	Store at -20°C for up to 1 year from the date of receipt, and avoid repeat freeze-thaw cycles.

TARGET INFORMATION

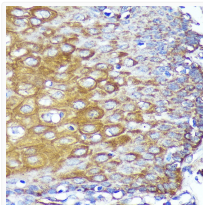
Gene ID	51706
Gene Symbol	CYB5R1
UniProt ID	NB5R1_HUMAN
Immunogen Region	1-305
Immunogen Sequence	MGIQTSPVLLASLGVGLVTL LGLAVGVSYLVRRSRRPQVTL LDPNEKYLLRLLDKTTVSHN TKRFRFALPTAHTLGLPVG KHIYLSLRIDGSLVIRPYTP VTSDEDDQGYVDLVIKVVYKKG VHPKFPEGGKMSQYLDLKV GDVVEFRGPGSGLLTYTGKGH FNIQPNKKSPPEPRVAKKLG MIAGGTGITPMLQLIRAILK VPEDPTQCFLLFANQTEKDI ILREDLEELQARYPNRFLK
Specificity	Recombinant fusion protein containing a sequence corresponding to amino acids 1-305 of human CYB5R1 (NP_057327.2).

ADDITIONAL INFORMATION

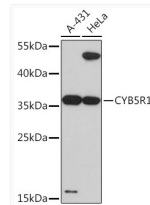
Note STRICTLY FOR FURTHER SCIENTIFIC RESEARCH USE ONLY (RUO). MUST NOT TO BE USED IN DIAGNOSTIC OR THERAPEUTIC APPLICATIONS.



Immunohistochemistry analysis of CYB5R1 in paraffin-embedded Rat ovary using CYB5R1 Rabbit polyclonal antibody (STJ11102866) at dilution of 1:100 (40x lens). Perform microwave antigen retrieval with 10 mM PBS buffer pH 7. 2 before commencing with immunohistochemistry staining protocol.



Immunohistochemistry analysis of CYB5R1 in paraffin-embedded Human esophageal using CYB5R1 Rabbit polyclonal antibody (STJ11102866) at dilution of 1:100 (40x lens). Perform microwave antigen retrieval with 10 mM PBS buffer pH 7. 2 before commencing with immunohistochemistry staining protocol.



Western blot analysis of various lysates using CYB5R1 Rabbit polyclonal antibody (STJ11102866) at 1:3000 dilution. Secondary antibody: HRP Goat Anti-Rabbit IgG (H+L) (STJS000856) at 1:10000 dilution. Lysates/proteins: 25 Mu g per lane. Blocking buffer: 3% nonfat dry milk in TBST. Detection: ECL Basic Kit. Exposure time: 90s.