

## Anti-HSD17B7 antibody (110-200) (STJ11102864)

### GENERAL INFORMATION

Product Type	Primary antibodies
Applications	WB/IHC-P/ELISA
Host / Source	Rabbit
Reactivity	Human/Mouse

### PRODUCT PROPERTIES

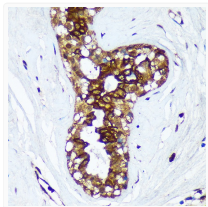
Clonality	Polyclonal
Concentration	Lot specific
Conjugation	Unconjugated
Purification	Affinity purification
Dilution Range	WB:1:500-1:2000 IHC-P:1:50-1:200 ELISA:Recommended starting concentration is 1 Mu g/mL. Please optimize the concentration based on your specific assay requirements.
Formulation	PBS with 0.01% Thimerosal, 50% Glycerol, pH 7.3.
Isotype	IgG
Molecular Weight	Protein Mw: 38kDa Observed Mw: 38kDa
Storage Instruction	Store at -20°C for up to 1 year from the date of receipt, and avoid repeat freeze-thaw cycles.

### TARGET INFORMATION

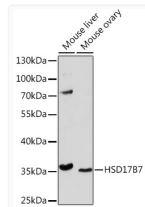
Gene ID	<a href="#">51478</a>
Gene Symbol	<a href="#">HSD17B7</a>
UniProt ID	<a href="#">DHB7_HUMAN</a>
Immunogen Region	110-200
Immunogen Sequence	SRKVIHMFSTAEGLLTQGDK ITADGLQEVFETNVFGHFIL IRELEPLLCHSDNPSQLIWT SSRSARKSNFSLDFQHSKG KEPYSSSKYAT
Specificity	Recombinant fusion protein containing a sequence corresponding to amino acids 110-200 of human HSD17B7 (NP_057455.1).

### ADDITIONAL INFORMATION

Note STRICTLY FOR FURTHER SCIENTIFIC RESEARCH USE ONLY (RUO). MUST NOT TO BE USED IN DIAGNOSTIC OR THERAPEUTIC APPLICATIONS.



Immunohistochemistry analysis of HSD17B7 in paraffin-embedded Human breast cancer using HSD17B7 Rabbit polyclonal antibody (STJ11102864) at dilution of 1:100 (40x lens). Perform microwave antigen retrieval with 10 mM Tris/EDTA buffer pH 9.0 before commencing with immunohistochemistry staining protocol.



Western blot analysis of various lysates using HSD17B7 Rabbit polyclonal antibody (STJ11102864) at 1:1000 dilution. Secondary antibody: HRP Goat Anti-Rabbit IgG (H+L) (STJS000856) at 1:10000 dilution. Lysates/proteins: 25 Mu g per lane. Blocking buffer: 3% nonfat dry milk in TBST. Detection: ECL Basic Kit. Exposure time: 5min.