

Anti-CNNM1 antibody (692-951) (STJ11102855)

GENERAL INFORMATION

Product Type	Primary antibodies
Applications	WB/IF/ICC/ELISA
Host / Source	Rabbit
Reactivity	Human/Mouse/Rat

PRODUCT PROPERTIES

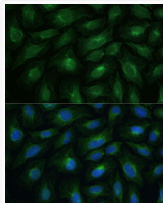
Clonality	Polyclonal
Concentration	Lot specific
Conjugation	Unconjugated
Purification	Affinity purification
Dilution Range	WB:1:500-1:2000 IF/ICC:1:50-1:100 ELISA:Recommended starting concentration is 1 μ g/mL. Please optimize the concentration based on your specific assay requirements.
Formulation	PBS with 0.01% Thimerosal, 50% Glycerol, pH 7.3.
Isotype	IgG
Molecular Weight	Protein Mw: 104kDa Observed Mw: 104kDa
Storage Instruction	Store at -20°C for up to 1 year from the date of receipt, and avoid repeat freeze-thaw cycles.

TARGET INFORMATION

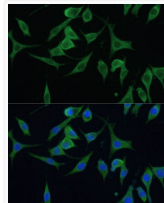
Gene ID	26507
Gene Symbol	CNNM1
UniProt ID	CNNM1_HUMAN
Immunogen Region	692-951
Immunogen Sequence	NGAFTYYGVPAIMTTACSDN DVRKVGSLAGSSVFLNRSRPS RCSGLNRSESPNRRERSDFGG SNTQLYSSNNLYMPDYSVH ILSDVQFVKITRQQYQNALT ACHMDSSPQSPDMEAFDTGD STKAPTTRGTPTQPKDDPAI TLLNNRNSLPCSRSDGLRSP SEVVYLRMEELAFTEEMTD FEEHSTQQLTLPAAVPTRA ASDSECCNINLDTETSPCSS DFEENVGKKLLRTLSSGQKR
Specificity	Recombinant fusion protein containing a sequence corresponding to amino acids 692-951 of human CNNM1 (NP_065081.2).

ADDITIONAL INFORMATION

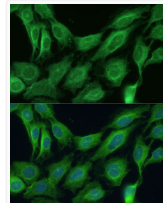
Note **STRICTLY FOR FURTHER SCIENTIFIC RESEARCH USE ONLY (RUO). MUST NOT TO BE USED IN DIAGNOSTIC OR THERAPEUTIC APPLICATIONS.**



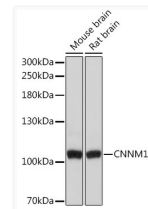
Immunofluorescence analysis of U-2 OS cells using CNNM1 Rabbit polyclonal antibody (STJ11102855) at dilution of 1:100. Secondary antibody: Cy3 Goat Anti-Rabbit IgG (H+L) at 1:500 dilution. Blue: DAPI for nuclear staining.



Immunofluorescence analysis of L929 cells using CNNM1 Rabbit polyclonal antibody (STJ11102855) at dilution of 1:100. Secondary antibody: Cy3 Goat Anti-Rabbit IgG (H+L) at 1:500 dilution. Blue: DAPI for nuclear staining.



Immunofluorescence analysis of C6 cells using CNNM1 Rabbit polyclonal antibody (STJ11102855) at dilution of 1:100. Secondary antibody: Cy3 Goat Anti-Rabbit IgG (H+L) at 1:500 dilution. Blue: DAPI for nuclear staining.



Western blot analysis of various lysates using CNNM1 Rabbit polyclonal antibody (STJ11102855) at 1:3000 dilution. Secondary antibody: HRP Goat Anti-Rabbit IgG (H+L) (STJS000856) at 1:10000 dilution. Lysates/proteins: 25 μ g per lane. Blocking buffer: 3% nonfat dry milk in TBST. Detection: ECL Basic Kit. Exposure time: 5s.