

Anti-GEMIN5 antibody (750-950) (STJ11102852)

GENERAL INFORMATION

Product Type	Primary antibodies
Applications	WB/IHC-P/ELISA
Host / Source	Rabbit
Reactivity	Human/Mouse/Rat

PRODUCT PROPERTIES

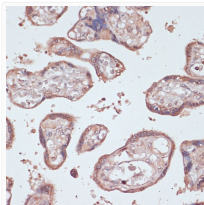
Clonality	Polyclonal
Concentration	Lot specific
Conjugation	Unconjugated
Purification	Affinity purification
Dilution Range	WB:1:500-1:2000 IHC-P:1:50-1:100 ELISA:Recommended starting concentration is 1 µg/mL. Please optimize the concentration based on your specific assay requirements.
Formulation	PBS with 0.01% Thimerosal, 50% Glycerol, pH 7.3.
Isotype	IgG
Molecular Weight	Protein Mw: 169kDa Observed Mw: 180kDa
Storage Instruction	Store at -20°C for up to 1 year from the date of receipt, and avoid repeat freeze-thaw cycles.

TARGET INFORMATION

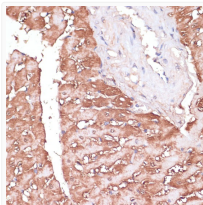
Gene ID	25929
Gene Symbol	GEMIN5
UniProt ID	GEM15_HUMAN
Immunogen Region	750-950
Immunogen Sequence	RTPVKLESIDGNEEESMKEN SGPVENVSDQEGEEQAREP ELPCGLAPAVSREPVICTPV SSGFEKSKVTINNKVILLKK EPPKEKPETLIKKRKARSL PLSTSLDHRSEELHQDCLV LATAKHSRELNEDVSADVEE RFHLGLFTDRATLYRMIDIE GKGLHENGHPELFHQLMLWK GDLKGVLTAAERGELTDNL V
Specificity	Recombinant fusion protein containing a sequence corresponding to amino acids 750-950 of human GEMIN5 (NP_056280.2).

ADDITIONAL INFORMATION

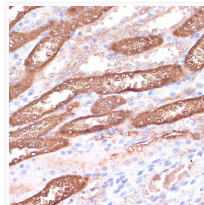
Note **STRICTLY FOR FURTHER SCIENTIFIC RESEARCH USE ONLY (RUO). MUST NOT TO BE USED IN DIAGNOSTIC OR THERAPEUTIC APPLICATIONS.**



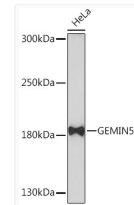
Immunohistochemistry analysis of GEMIN5 in paraffin-embedded human placenta using GEMIN5 Rabbit polyclonal antibody (STJ11102852) at dilution of 1:100 (40x lens). Perform microwave antigen retrieval with 10 mM PBS buffer pH 7.2 before commencing with immunohistochemistry staining protocol.



Immunohistochemistry analysis of GEMIN5 in paraffin-embedded rat heart using GEMIN5 Rabbit polyclonal antibody (STJ11102852) at dilution of 1:100 (40x lens). Perform microwave antigen retrieval with 10 mM PBS buffer pH 7.2 before commencing with immunohistochemistry staining protocol.



Immunohistochemistry analysis of GEMIN5 in paraffin-embedded rat kidney using GEMIN5 Rabbit polyclonal antibody (STJ11102852) at dilution of 1:100 (40x lens). Perform microwave antigen retrieval with 10 mM PBS buffer pH 7.2 before commencing with immunohistochemistry staining protocol.



Western blot analysis of lysates from HeLa cells, using GEMIN5 Rabbit polyclonal antibody (STJ11102852) at 1:1000 dilution. Secondary antibody: HRP Goat Anti-Rabbit IgG (H+L) (STJS000856) at 1:10000 dilution. Lysates/proteins: 25 µg per lane. Blocking buffer: 3% nonfat dry milk in TBST. Detection: ECL Basic Kit. Exposure time: 180s.