

## Anti-TCF4 antibody (1-210) (STJ11102820)

### GENERAL INFORMATION

Product Type	Primary antibodies
Applications	WB/IHC-P/IF/ICC/ELISA
Host / Source	Rabbit
Reactivity	Human/Mouse/Rat

### PRODUCT PROPERTIES

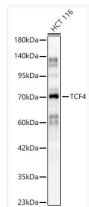
Clonality	Polyclonal
Concentration	Lot specific
Conjugation	Unconjugated
Purification	Affinity purification
Dilution Range	WB:1:500-1:2000 IHC-P:1:50-1:200 IF/ICC:1:50-1:200 ELISA:Recommended starting concentration is 1 µg/mL. Please optimize the concentration based on your specific assay requirements.
Formulation	PBS with 0.05% Proclin300, 50% Glycerol, pH 7.3.
Isotype	IgG
Molecular Weight	Protein Mw: 71kDa Observed Mw: 71kDa
Storage Instruction	Store at -20°C for up to 1 year from the date of receipt, and avoid repeat freeze-thaw cycles.

### TARGET INFORMATION

Gene ID	<a href="#">6925</a>
Gene Symbol	<a href="#">TCF4</a>
UniProt ID	<a href="#">ITF2_HUMAN</a>
Immunogen Region	1-210
Immunogen Sequence	MHHQQRMAALGTDKELSDLL DFSAMFSPPVSSGKNGPTSL ASGHFTGSNVEDRSSSGSWG NGGHPSPSRNYGDGTPYDHM TSRDLGSHDNLSPPFVNSRI QSKTERGSYSSYGRESNLQG CHQQSLLGGMDMGNPGTLS PTKPGSQYYQYSSNPNRRRP LHSSAMEVQTKKVRKVPGL PSSVYAPSASTADYNRDSGP YPSSKPATST
Specificity	Recombinant fusion protein containing a sequence corresponding to amino acids 1-210 of human TCF4 (NP_003190.1).

### ADDITIONAL INFORMATION

Note STRICTLY FOR FURTHER SCIENTIFIC RESEARCH USE ONLY (RUO). MUST NOT TO BE USED IN DIAGNOSTIC OR THERAPEUTIC APPLICATIONS.



Western blot analysis of lysates from HCT 116 cells, using TCF4 Rabbit polyclonal antibody (STJ11102820) at 1:800 dilution. Secondary antibody: HRP Goat Anti-Rabbit IgG (H+L) (STJS000856) at 1:10000 dilution. Lysates/proteins: 25µg per lane. Blocking buffer: 3% nonfat dry milk in TBST. Detection: ECL Basic Kit. Exposure time: 30s.