

Anti-ADRA2C antibody (240-380) (STJ11102815)

GENERAL INFORMATION

| | |
|---------------|--------------------|
| Product Type | Primary antibodies |
| Applications | WB/ELISA |
| Host / Source | Rabbit |
| Reactivity | Human/Mouse |

PRODUCT PROPERTIES

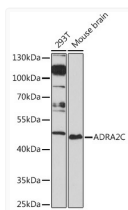
| | |
|---------------------|--|
| Clonality | Polyclonal |
| Concentration | Lot specific |
| Conjugation | Unconjugated |
| Purification | Affinity purification |
| Dilution Range | WB:1:500-1:2000 ELISA:Recommended starting concentration is 1 µg/mL. Please optimize the concentration based on your specific assay requirements. |
| Formulation | PBS with 0.01% Thimerosal, 50% Glycerol, pH 7.3. |
| Isotype | IgG |
| Molecular Weight | Protein Mw: 50kDa Observed Mw: 50kDa |
| Storage Instruction | Store at -20°C for up to 1 year from the date of receipt, and avoid repeat freeze-thaw cycles. |

TARGET INFORMATION

| | |
|--------------------|--|
| Gene ID | 152 |
| Gene Symbol | ADRA2C |
| UniProt ID | ADA2C_HUMAN |
| Immunogen Region | 240-380 |
| Immunogen Sequence | RTRTLSEKRAPVGPDGASPT TENGLGAAAGAGENGHCAPP PADVEPDESSAAAERRRRRG ALRRGGRRRAGAEGGAGGAD GQGAGPGAESGALTASRSP GPGGRLSRASSRSVEFFLSR RRRARSSVCRKVKVAQAREKR F |
| Specificity | Recombinant fusion protein containing a sequence corresponding to amino acids 240-380 of human ADRA2C (NP_000674.2). |

ADDITIONAL INFORMATION

Note STRICTLY FOR FURTHER SCIENTIFIC RESEARCH USE ONLY (RUO). MUST NOT TO BE USED IN DIAGNOSTIC OR THERAPEUTIC APPLICATIONS.



Western blot analysis of various lysates using ADRA2C Rabbit polyclonal antibody (STJ11102815) at 1:1000 dilution. Secondary antibody: HRP Goat Anti-Rabbit IgG (H+L) (STJS000856) at 1:10000 dilution. Lysates/proteins: 25 µg per lane. Blocking buffer: 3% nonfat dry milk in TBST. Detection: ECL Basic Kit. Exposure time: 90s.