

Anti-CD11a/LFA-1A/ITGAL antibody (26-1086) (STJ11102795)

GENERAL INFORMATION

Product Type	Primary antibodies
Applications	WB/ELISA
Host / Source	Rabbit
Reactivity	Human/Rat

PRODUCT PROPERTIES

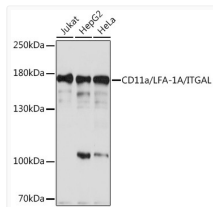
Clonality	Polyclonal
Concentration	Lot specific
Conjugation	Unconjugated
Purification	Affinity purification
Dilution Range	WB:1:500-1:2000 ELISA:Recommended starting concentration is 1 Mu g/mL. Please optimize the concentration based on your specific assay requirements.
Formulation	PBS with 0.01% Thimerosal, 50% Glycerol, pH 7.3.
Isotype	IgG
Molecular Weight	Protein Mw: 129kDa Observed Mw: 180kDa
Storage Instruction	Store at -20°C for up to 1 year from the date of receipt, and avoid repeat freeze-thaw cycles.

TARGET INFORMATION

Gene ID	3683
Gene Symbol	ITGAL
UniProt ID	ITAL_HUMAN
Immunogen Region	26-1086
Immunogen Sequence	YNLDVIRGARSFSPPRAGRHF GYRVLQVGNVIVGAPGEGN STGSLYQCQSGTGHCLPVTL RGSNYTSKYLGMTLATDPTD GSILFAAVQFSTSYKTEFDF SDYVKKRDPDALLKHVKHML LLTNTFGAINYVATEVFREE LGARPDATKVLIIITDGEAT DSGNIDAAKDIIRYIIGIGK HFQTKESQETLHKFASKPAS EFKILDTFEKLKDLFTELQ KKIYVIEGTSKQDLTSFNM
Specificity	Recombinant fusion protein containing a sequence corresponding to amino acids 26-306 of human CD11a/LFA-1A/CD11a/LFA-1A/ITGAL (NP_001107852.1).

ADDITIONAL INFORMATION

Note STRICTLY FOR FURTHER SCIENTIFIC RESEARCH USE ONLY (RUO). MUST NOT TO BE USED IN DIAGNOSTIC OR THERAPEUTIC APPLICATIONS.



Western blot analysis of various lysates using CD11a/LFA-1A/CD11a/LFA-1A/ITGAL Rabbit polyclonal antibody (STJ11102795) at 1:1000 dilution. Secondary antibody: HRP Goat Anti-Rabbit IgG (H+L) (STJS000856) at 1:10000 dilution. Lysates/proteins: 25 Mu g per lane. Blocking buffer: 3% nonfat dry milk in TBST. Detection: ECL Basic Kit. Exposure time: 5s.