

Anti-CSK antibody (188-450) (STJ11102784)

GENERAL INFORMATION

| | |
|---------------|-----------------------|
| Product Type | Primary antibodies |
| Applications | WB/IHC-P/IF/ICC/ELISA |
| Host / Source | Rabbit |
| Reactivity | Human/Mouse/Rat |

PRODUCT PROPERTIES

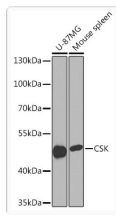
| | |
|---------------------|---|
| Clonality | Polyclonal |
| Concentration | Lot specific |
| Conjugation | Unconjugated |
| Purification | Affinity purification |
| Dilution Range | WB:1:500-1:1000 IHC-P:1:50-1:200 IF/ICC:1:50-1:200 ELISA:Recommended starting concentration is 1 µg/mL. Please optimize the concentration based on your specific assay requirements. |
| Formulation | PBS with 0.09% Sodium Azide, 50% Glycerol, pH 7.3. |
| Isotype | IgG |
| Molecular Weight | Protein Mw: 51kDa Observed Mw: 50kDa |
| Storage Instruction | Store at -20°C for up to 1 year from the date of receipt, and avoid repeat freeze-thaw cycles. |

TARGET INFORMATION

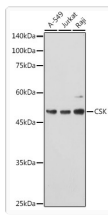
| | |
|--------------------|---|
| Gene ID | 1445 |
| Gene Symbol | CSK |
| UniProt ID | CSK_HUMAN |
| Immunogen Region | 188-450 |
| Immunogen Sequence | WALNMKELKLLQTIGKGEFG DVMLGDYRGNKVAVKCIKND ATAAFLAEASVMTQLRHSN LVQLLGIVVEEKGGLYIVTE YMAKGLVDYLRSGRSVLG GDCLLKFSLDVCEAMEYLEG NNFVHRDLAARNVLVSEDNV AKVSDFGLTKEASSTQDTGK LPVKWTAPEALREKFKSTKS DVWSFGILLWEIYFGRVPY PRIPLKDVVPRVEKGYKMDA PDGCPPAVYEVMKNCWHLN |
| Specificity | Recombinant fusion protein containing a sequence corresponding to amino acids 188-450 of human CSK (NP_004374.1). |

ADDITIONAL INFORMATION

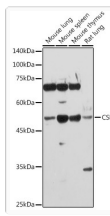
| | |
|------|---|
| Note | STRICTLY FOR FURTHER SCIENTIFIC RESEARCH USE ONLY (RUO). MUST NOT TO BE USED IN DIAGNOSTIC OR THERAPEUTIC APPLICATIONS. |
|------|---|



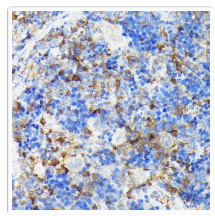
Western blot analysis of extracts of various cell lines, using CSK rabbit polyclonal antibody (STJ11102784) at 1:1000 dilution. Secondary antibody: HRP Goat Anti-rabbit IgG (H+L) (STJS000856) at 1:10000 dilution. Lysates/proteins: 25 μ g per lane. Blocking buffer: 3% non-fat dry milk in TBST. Detection: ECL Basic Kit. Exposure time: 90s.



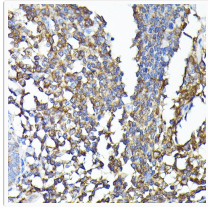
Western blot analysis of extracts of various cell lines, using CSK antibody (STJ11102784) at 1:1000 dilution. Secondary antibody: HRP Goat Anti-rabbit IgG (H+L) (STJS000856) at 1:10000 dilution. Lysates/proteins: 25 μ g per lane. Blocking buffer: 3% non-fat dry milk in TBST. Detection: ECL Basic Kit. Exposure time: 60s.



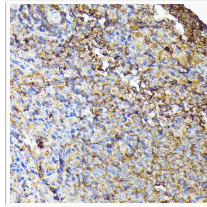
Western blot analysis of extracts of various cell lines, using CSK antibody (STJ11102784) at 1:1000 dilution. Secondary antibody: HRP Goat Anti-rabbit IgG (H+L) (STJS000856) at 1:10000 dilution. Lysates/proteins: 25 μ g per lane. Blocking buffer: 3% non-fat dry milk in TBST. Detection: ECL Basic Kit. Exposure time: 90s.



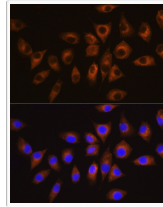
Immunohistochemistry analysis of paraffin-embedded rat spleen using CSK rabbit polyclonal antibody (STJ11102784) at dilution of 1:100 (40x lens). Perform high pressure antigen retrieval with 10 mM citrate buffer pH 6.0 before commencing with immunohistochemistry staining protocol.



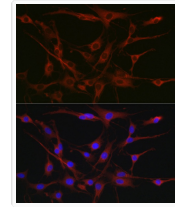
Immunohistochemistry analysis of paraffin-embedded human colon carcinoma using CSK rabbit polyclonal antibody (STJ11102784) at dilution of 1:100 (40x lens). Perform high pressure antigen retrieval with 10 mM citrate buffer pH 6.0 before commencing with immunohistochemistry staining protocol.



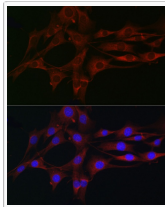
Immunohistochemistry analysis of paraffin-embedded mouse spleen using CSK rabbit polyclonal antibody (STJ11102784) at dilution of 1:100 (40x lens). Perform high pressure antigen retrieval with 10 mM citrate buffer pH 6.0 before commencing with immunohistochemistry staining protocol.



Immunofluorescence analysis of L929 cells using CSK rabbit polyclonal antibody (STJ11102784) at dilution of 1:100 (40x lens). Blue: DAPI for nuclear staining.



Immunofluorescence analysis of C6 cells using CSK rabbit polyclonal antibody (STJ11102784) at dilution of 1:100 (40x lens). Blue: DAPI for nuclear staining.



Immunofluorescence analysis of NIH/3T3 cells using CSK rabbit polyclonal antibody (STJ11102784) at dilution of 1:100 (40x lens). Blue: DAPI for nuclear staining.