

Anti-CALCA antibody (26-128) (STJ11102780)

GENERAL INFORMATION

Product Type	Primary antibodies
Applications	IHC-P/ELISA
Host / Source	Rabbit
Reactivity	Mouse

PRODUCT PROPERTIES

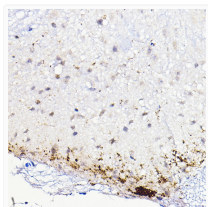
Clonality	Polyclonal
Concentration	Lot specific
Conjugation	Unconjugated
Purification	Affinity purification
Dilution Range	IHC-P:1:50-1:200 ELISA:Recommended starting concentration is 1 µg/mL. Please optimize the concentration based on your specific assay requirements.
Formulation	PBS with 0.01% Thimerosal, 50% Glycerol, pH 7.3.
Isotype	IgG
Molecular Weight	Protein Mw: 14kDa Observed Mw: Refer to figures
Storage Instruction	Store at -20°C for up to 1 year from the date of receipt, and avoid repeat freeze-thaw cycles.

TARGET INFORMATION

Gene ID	796
Gene Symbol	CALCA
UniProt ID	CALCA_HUMAN
Immunogen Region	26-128
Immunogen Sequence	APFRSALESSPADPATLSED EARLLLAALVQDYVQMKASE LEQEQEREGRSRIIAQKRACD TATCVTHRLAGLLSRSGGVV KNNFVPTNVGSKAFGRRRRD LQA
Specificity	Recombinant fusion protein containing a sequence corresponding to amino acids 26-128 of CALCA (NP_001029125.1).

ADDITIONAL INFORMATION

Note STRICTLY FOR FURTHER SCIENTIFIC RESEARCH USE ONLY (RUO). MUST NOT TO BE USED IN DIAGNOSTIC OR THERAPEUTIC APPLICATIONS.



Immunohistochemistry analysis of CALCA in paraffin-embedded mouse spinal cord using CALCA Rabbit polyclonal antibody (STJ11102780) at dilution of 1:100 (40x lens). Perform high pressure antigen retrieval with 10 mM citrate buffer pH 6.0 before commencing with immunohistochemistry staining protocol.