

Anti-PDCD7 antibody (1-100) [S8MR] (STJ11102768)

GENERAL INFORMATION

| | |
|---------------|--------------------|
| Product Type | Primary antibodies |
| Applications | WB/IHC-P/ELISA |
| Host / Source | Rabbit |
| Reactivity | Human/Mouse/Rat |

PRODUCT PROPERTIES

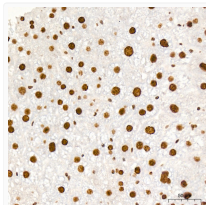
| | |
|---------------------|--|
| Clonality | Monoclonal |
| Concentration | Lot specific |
| Conjugation | Unconjugated |
| Purification | Affinity purification |
| Dilution Range | WB:1:500-1:1000 IHC-P:1:50-1:200 ELISA:Recommended starting concentration is 1 Mu g/mL. Please optimize the concentration based on your specific assay requirements. |
| Formulation | PBS with 0.02% Sodium Azide, 0.05% BSA, 50% Glycerol, pH 7.3. |
| Isotype | IgG |
| Molecular Weight | Protein Mw: 55kDa Observed Mw: 55kDa |
| Storage Instruction | Store at -20°C for up to 1 year from the date of receipt, and avoid repeat freeze-thaw cycles. |

TARGET INFORMATION

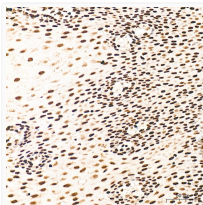
| | |
|--------------------|--|
| Gene ID | 10081 |
| Gene Symbol | PDCD7 |
| UniProt ID | PDCD7_HUMAN |
| Immunogen Region | 1-100 |
| Immunogen Sequence | MALPPFFGQGRPGPPPPQPP PPAPFGCPPPLPSFAFPPP LPQRPGPFFGASAPFLQPPL ALQPRASAEASRGGGAGAF YPVPPLPLPPPPQCRPFFG |
| Specificity | A synthetic peptide corresponding to a sequence within amino acids 1-100 of human PDCD7 (Q8N8D1). |

ADDITIONAL INFORMATION

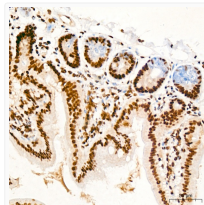
Note STRICTLY FOR FURTHER SCIENTIFIC RESEARCH USE ONLY (RUO). MUST NOT TO BE USED IN DIAGNOSTIC OR THERAPEUTIC APPLICATIONS.



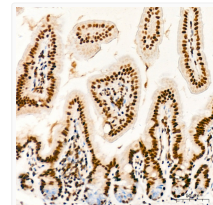
Immunohistochemistry analysis of PDCD7 in paraffin-embedded rat liver tissue using PDCD7 Rabbit monoclonal antibody (STJ11102768) at a dilution of 1:200 (40x lens). High pressure antigen retrieval was performed with 0.01 M citrate buffer (pH 6.0) prior to immunohistochemistry staining.



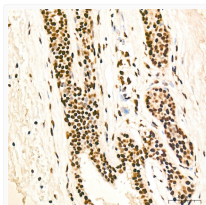
Immunohistochemistry analysis of PDCD7 in paraffin-embedded human esophagus tissue using PDCD7 Rabbit monoclonal antibody (STJ11102768) at a dilution of 1:200 (40x lens). High pressure antigen retrieval was performed with 0.01 M citrate buffer (pH 6.0) prior to immunohistochemistry staining.



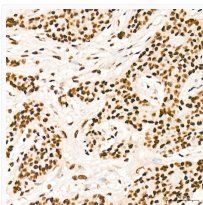
Immunohistochemistry analysis of PDCD7 in paraffin-embedded mouse intestine tissue using PDCD7 Rabbit monoclonal antibody (STJ11102768) at a dilution of 1:200 (40x lens). High pressure antigen retrieval was performed with 0.01 M citrate buffer (pH 6.0) prior to immunohistochemistry staining.



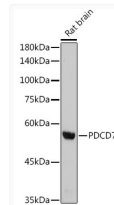
Immunohistochemistry analysis of PDCD7 in paraffin-embedded human small intestine tissue using PDCD7 Rabbit monoclonal antibody (STJ11102768) at a dilution of 1:200 (40x lens). High pressure antigen retrieval was performed with 0.01 M citrate buffer (pH 6.0) prior to immunohistochemistry staining.



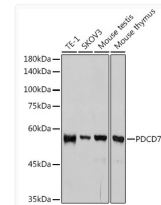
Immunohistochemistry analysis of PDCD7 in paraffin-embedded human breast tissue using PDCD7 Rabbit monoclonal antibody (STJ11102768) at a dilution of 1:200 (40x lens). High pressure antigen retrieval was performed with 0.01 M citrate buffer (pH 6.0) prior to immunohistochemistry staining.



Immunohistochemistry analysis of PDCD7 in paraffin-embedded human breast cancer tissue using PDCD7 Rabbit monoclonal antibody (STJ11102768) at a dilution of 1:200 (40x lens). High pressure antigen retrieval was performed with 0.01 M citrate buffer (pH 6.0) prior to immunohistochemistry staining.



Western blot analysis of lysates from Rat brain, using PDCD7 Rabbit monoclonal antibody (STJ11102768) at 1:1000 dilution. Secondary antibody: HRP Goat Anti-Rabbit IgG (H+L) (STJS000856) at 1:10000 dilution. Lysates/proteins: 25 Mu g per lane. Blocking buffer: 3% nonfat dry milk in TBST. Detection: ECL Basic Kit. Exposure time: 90s.



Western blot analysis of various lysates using PDCD7 Rabbit monoclonal antibody (STJ11102768) at 1:1000 dilution. Secondary antibody: HRP Goat Anti-Rabbit IgG (H+L) (STJS000856) at 1:10000 dilution. Lysates/proteins: 25 Mu g per lane. Blocking buffer: 3% nonfat dry milk in TBST. Detection: ECL Basic Kit. Exposure time: 10s.