

Anti-PDGFRB antibody (900-1000) (STJ11102763)

GENERAL INFORMATION

Product Type	Primary antibodies
Applications	WB/IHC-P/IF/ICC/ELISA
Host / Source	Rabbit
Reactivity	Human/Mouse/Rat

PRODUCT PROPERTIES

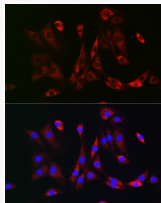
Clonality	Polyclonal
Concentration	Lot specific
Conjugation	Unconjugated
Purification	Affinity purification
Dilution Range	WB:1:500-1:1000 IHC-P:1:50-1:200 IF/CC:1:50-1:200 ELISA:Recommended starting concentration is 1 Mu g/mL. Please optimize the concentration based on your specific assay requirements.
Formulation	PBS with 0.01% Thimerosal, 50% Glycerol, pH 7.3.
Isotype	IgG
Molecular Weight	Protein Mw: 124kDa Observed Mw: 190kDa
Storage Instruction	Store at -20°C for up to 1 year from the date of receipt, and avoid repeat freeze-thaw cycles.

TARGET INFORMATION

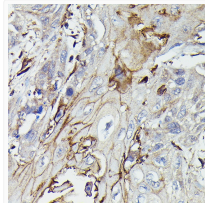
Gene ID	5159
Gene Symbol	PDGFRB
UniProt ID	PGFRB_HUMAN
Immunogen Region	900-1000
Immunogen Sequence	GGTPYPELPMNEQFYNAIKR GYRMAQPAHASDEIYEIMQK CWEEKFEIRPPFSQLVLLLE RLLGEGYKKKYQQVDEEFLR SDHPAILRSQARLPGFHGLR S
Specificity	Recombinant fusion protein containing a sequence corresponding to amino acids 900-1000 of human PDGFRB (NP_002600.1).

ADDITIONAL INFORMATION

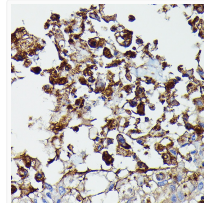
Note **STRICTLY FOR FURTHER SCIENTIFIC RESEARCH USE ONLY (RUO). MUST NOT TO BE USED IN DIAGNOSTIC OR THERAPEUTIC APPLICATIONS.**



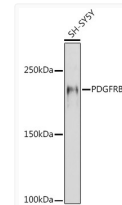
Immunofluorescence analysis of NIH-3T3 cells using PDGFRB Rabbit polyclonal antibody (STJ11102763) at dilution of 1:100 (40x lens). Secondary antibody: Cy3 Goat Anti-Rabbit IgG (H+L) at 1:500 dilution. Blue: DAPI for nuclear staining.



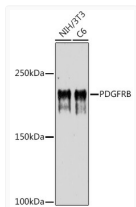
Immunohistochemistry analysis of PDGFRB in paraffin-embedded human esophageal cancer using PDGFRB Rabbit polyclonal antibody (STJ11102763) at dilution of 1:100 (40x lens). Perform high pressure antigen retrieval with 10 mM citrate buffer pH 6.0 before commencing with immunohistochemistry staining protocol.



Immunohistochemistry analysis of PDGFRB in paraffin-embedded human lung cancer using PDGFRB Rabbit polyclonal antibody (STJ11102763) at dilution of 1:100 (40x lens). Perform high pressure antigen retrieval with 10 mM citrate buffer pH 6.0 before commencing with immunohistochemistry staining protocol.



Western blot analysis of lysates from SH-SY5Y cells, using PDGFRB Rabbit polyclonal antibody (STJ11102763) at 1:1000 dilution. Secondary antibody: HRP Goat Anti-Rabbit IgG (H+L) (STJS000856) at 1:10000 dilution. Lysates/proteins: 25 Mu g per lane. Blocking buffer: 3% nonfat dry milk in TBST. Detection: ECL Enhanced Kit. Exposure time: 180s.



Western blot analysis of various lysates using PDGFRB Rabbit polyclonal antibody (STJ11102763) at 1:1000 dilution. Secondary antibody: HRP Goat Anti-Rabbit IgG (H+L) (STJS000856) at 1:10000 dilution. Lysates/proteins: 25 Mu g per lane. Blocking buffer: 3% nonfat dry milk in TBST. Detection: ECL Basic Kit. Exposure time: 180s.