

Anti-TUG/ASPCR1 antibody (200-300) [S8MR] (STJ11102758)

GENERAL INFORMATION

Product Type	Primary antibodies
Applications	WB/ELISA
Host / Source	Rabbit
Reactivity	Human/Mouse

PRODUCT PROPERTIES

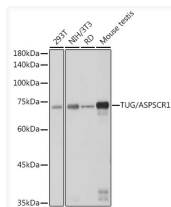
Clonality	Monoclonal
Concentration	Lot specific
Conjugation	Unconjugated
Purification	Affinity purification
Dilution Range	WB:1:500-1:1000 ELISA:Recommended starting concentration is 1 Mu g/mL. Please optimize the concentration based on your specific assay requirements.
Formulation	PBS with 0.02% Sodium Azide, 0.05% BSA, 50% Glycerol, pH 7.3.
Isotype	IgG
Molecular Weight	Protein Mw: 60kDa Observed Mw: 75kDa
Storage Instruction	Store at -20°C for up to 1 year from the date of receipt, and avoid repeat freeze-thaw cycles.

TARGET INFORMATION

Gene ID	79058
Gene Symbol	ASPCR1
UniProt ID	ASPC1_HUMAN
Immunogen Region	200-300
Immunogen Sequence	LPLESGELSRGDLSPEDAD TSGPCCEHTQEKQSTRAPAA APFVPFSGGGQRLGGPPGPT RPLTSSSAKLPKSLSSPGGP SKPKKSKSGQDPQQEQEQER E
Specificity	A synthetic peptide corresponding to a sequence within amino acids 200-300 of human TUG/ASPCR1 (Q9BZE9).

ADDITIONAL INFORMATION

Note **STRICTLY FOR FURTHER SCIENTIFIC RESEARCH USE ONLY (RUO). MUST NOT TO BE USED IN DIAGNOSTIC OR THERAPEUTIC APPLICATIONS.**



Western blot analysis of extracts of various lysates, using TUG/ASPCR1 antibody (STJ11102758) at 1:1000 dilution. Secondary antibody: HRP Goat Anti-Rabbit IgG (H+L) (STJS000856) at 1:10000 dilution. Lysates/proteins: 25 Mu g per lane. Blocking buffer: 3% nonfat dry milk in TBST. Detection: ECL Basic Kit. Exposure time: 1s.