

## Anti-ARPC2 antibody (200-300) [S5MR] (STJ11102755)

### GENERAL INFORMATION

Product Type	Primary antibodies
Applications	WB/IF/ICC/IP/ELISA
Host / Source	Rabbit
Reactivity	Human/Mouse/Rat

### PRODUCT PROPERTIES

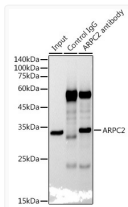
Clonality	Monoclonal
Concentration	Lot specific
Conjugation	Unconjugated
Purification	Affinity purification
Dilution Range	WB:1:500-1:1000 IF/CC:1:50-1:200 IP:0.5 Mu g-4 Mu g antibody for 200 Mu g-400 Mu g extracts of whole cells ELISA:Recommended starting concentration is 1 Mu g/mL. Please optimize the concentration based on your specific assay requirements
Formulation	PBS with 0.02% Sodium Azide, 0.05% BSA, 50% Glycerol, pH 7.3.
Isotype	IgG
Molecular Weight	Protein Mw: 34kDa Observed Mw: 34kDa
Storage Instruction	Store at -20°C for up to 1 year from the date of receipt, and avoid repeat freeze-thaw cycles.

### TARGET INFORMATION

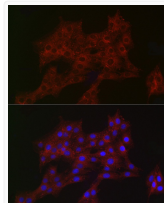
Gene ID	<a href="#">10109</a>
Gene Symbol	<a href="#">ARPC2</a>
UniProt ID	<a href="#">ARPC2_HUMAN</a>
Immunogen Region	200-300
Immunogen Sequence	FSHREPPLELKDTDAAVGDN IGYITFVLFPRHTNASARDN TINLIHTFRDYLYHYHIKCSK AYIHTRMRAKTSDFLKVLNR ARPDAEKKEMKTITGKTFSS R
Specificity	A synthetic peptide corresponding to a sequence within amino acids 200-300 of human ARPC2 (O15144).

### ADDITIONAL INFORMATION

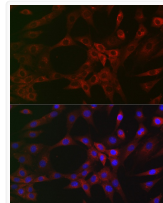
Note STRICTLY FOR FURTHER SCIENTIFIC RESEARCH USE ONLY (RUO). MUST NOT TO BE USED IN DIAGNOSTIC OR THERAPEUTIC APPLICATIONS.



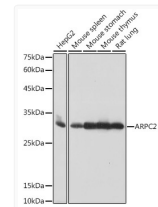
Immunoprecipitation analysis of 300 Mu g extracts from HepG2 cells using 3 Mu g ARPC2 antibody (STJ11102755). Western blot was performed from the immunoprecipitate using ARPC2 antibody (STJ11102755) at a dilution of 1:1000.



Immunofluorescence analysis of PC-12 cells using ARPC2 Rabbit monoclonal antibody (STJ11102755) at dilution of 1:100 (40x lens). Secondary antibody: Cy3 Goat Anti-Rabbit IgG (H+L) at 1:500 dilution. Blue: DAPI for nuclear staining.



Immunofluorescence analysis of NIH/3T3 cells using ARPC2 Rabbit monoclonal antibody (STJ11102755) at dilution of 1:100 (40x lens). Secondary antibody: Cy3 Goat Anti-Rabbit IgG (H+L) at 1:500 dilution. Blue: DAPI for nuclear staining.



Western blot analysis of various lysates using ARPC2 Rabbit monoclonal antibody (STJ11102755) at 1:1000 dilution. Secondary antibody: HRP Goat Anti-Rabbit IgG (H+L) (STJS000856) at 1:10000 dilution. Lysates/proteins: 25 Mu g per lane. Blocking buffer: 3% nonfat dry milk in TBST. Detection: ECL Basic Kit. Exposure time: 1s.