

Anti-Fibronectin antibody (1-2477) [S9MR] (STJ11102749)

GENERAL INFORMATION

Product Type	Primary antibodies
Applications	WB/IF/ICC/ELISA
Host / Source	Rabbit
Reactivity	Human/Mouse

PRODUCT PROPERTIES

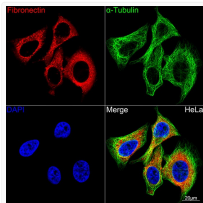
Clonality	Monoclonal
Concentration	Lot specific
Conjugation	Unconjugated
Purification	Affinity purification
Dilution Range	WB:1:2000-1:6000 IF/ICC:1:50-1:200 ELISA:Recommended starting concentration is 1 Mu g/mL. Please optimize the concentration based on your specific assay requirements.
Formulation	PBS with 0.02% Sodium Azide, 0.05% BSA, 50% Glycerol, pH 7.3.
Isotype	IgG
Molecular Weight	Protein Mw: 272kDa Observed Mw: 300kDa
Storage Instruction	Store at -20°C for up to 1 year from the date of receipt, and avoid repeat freeze-thaw cycles.

TARGET INFORMATION

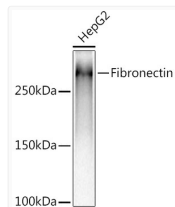
Gene ID	2335
Gene Symbol	FN1
UniProt ID	FINC_HUMAN
Immunogen Region	1-2477
Immunogen Sequence	MLRGPGLLLLLAVQCLGTA VPSTGASKSKRQAQQMVQPQ SPVAVSQSKPGCYDNGKHYQ INQQWERTYLGNALVCTCYG GSRGFNCESKPEAEETCFDK YTGNTYRVGDTYERPKDSMI WDCTCIGAGRGRISCTIANR CHEGGQSYKIGDTWRRPHET GGYMLECVCLGNGKGEWTCK PIAEKCFDHAAGTSYVVGGET WEKPYQGWMMVDCTCLGEGS GRITCTSRNRRCNDQDTRTS
Specificity	Recombinant fusion protein containing a sequence corresponding to amino acids 1-2477 of human FN1 (P02751).

ADDITIONAL INFORMATION

Note **STRICTLY FOR FURTHER SCIENTIFIC RESEARCH USE ONLY (RUO). MUST NOT TO BE USED IN DIAGNOSTIC OR THERAPEUTIC APPLICATIONS.**



Confocal imaging of HeLa cells using Fibronectin Rabbit monoclonal antibody (STJ11102749, dilution 1:50) (Red). The cells were counterstained with Alpha-Tubulin Mouse monoclonal antibody (dilution 1:400) (Green). DAPI was used for nuclear staining (blue). Objective: 100x.



Western blot analysis of extracts of Hep G2 cells, using Fibronectin Rabbit monoclonal antibody (STJ11102749) at 1:5000 dilution. Secondary antibody: HRP Goat Anti-Rabbit IgG (H+L) (STJS000856) at 1:10000 dilution. Lysates/proteins: 25 Mu g per lane. Blocking buffer: 3% nonfat dry milk in TBST. Detection: ECL Basic Kit. Exposure time: 10s.