

## Anti-IDO1 antibody (50-150) [S2MR] (STJ11102742)

### GENERAL INFORMATION

Product Type	Primary antibodies
Applications	IHC-P/ELISA
Host / Source	Rabbit
Reactivity	Human/Mouse

### PRODUCT PROPERTIES

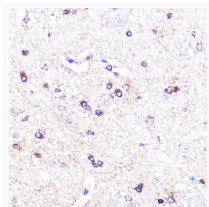
Clonality	Monoclonal
Concentration	Lot specific
Conjugation	Unconjugated
Purification	Affinity purification
Dilution Range	IHC-P:1:50-1:200 ELISA:Recommended starting concentration is 1 µg/mL. Please optimize the concentration based on your specific assay requirements.
Formulation	PBS with 0.02% Sodium Azide, 0.05% BSA, 50% Glycerol, pH 7.3.
Isotype	IgG
Molecular Weight	Protein Mw: 45kDa Observed Mw: 42kDa
Storage Instruction	Store at -20°C for up to 1 year from the date of receipt, and avoid repeat freeze-thaw cycles.

### TARGET INFORMATION

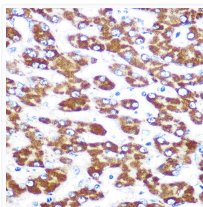
Gene ID	<a href="#">3620</a>
Gene Symbol	<a href="#">IDO1</a>
UniProt ID	<a href="#">I23O1_HUMAN</a>
Immunogen Region	50-150
Immunogen Sequence	IESGQLRERVEKLNMLSIDH LTDHKSQRLARLVLCITMA YVWGKGGHDVVRKVLPRNIAV PYCQLSKKLELPPILVYADC VLANWKKKDPNKPLTYENMD V
Specificity	A synthetic peptide corresponding to a sequence within amino acids 50-150 of human IDO1 (P14902).

### ADDITIONAL INFORMATION

Note STRICTLY FOR FURTHER SCIENTIFIC RESEARCH USE ONLY (RUO). MUST NOT TO BE USED IN DIAGNOSTIC OR THERAPEUTIC APPLICATIONS.



Immunohistochemistry analysis of IDO1 in paraffin-embedded mouse spinal cord using IDO1 Rabbit monoclonal antibody (STJ11102742) at dilution of 1:100 (40x lens). Perform microwave antigen retrieval with 10 mM PBS buffer pH 7.2 before commencing with immunohistochemistry staining protocol.



Immunohistochemistry analysis of IDO1 in paraffin-embedded human liver using IDO1 Rabbit monoclonal antibody (STJ11102742) at dilution of 1:100 (40x lens). Perform microwave antigen retrieval with 10 mM PBS buffer pH 7.2 before commencing with immunohistochemistry staining protocol.