

Anti-Myeloperoxidase antibody (646-745) [S1MR] (STJ11102741)

GENERAL INFORMATION

Product Type	Primary antibodies
Applications	WB/IHC-P/ELISA
Host / Source	Rabbit
Reactivity	Human

PRODUCT PROPERTIES

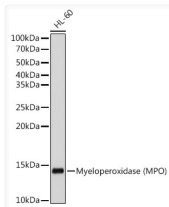
Clonality	Monoclonal
Concentration	Lot specific
Conjugation	Unconjugated
Purification	Affinity purification
Dilution Range	WB:1:500-1:1000 IHC-P:1:500-1:1000 ELISA:Recommended starting concentration is 1 Mu g/mL. Please optimize the concentration based on your specific assay requirements.
Formulation	PBS with 0.05% Proclin300, 0.05% BSA, 50% Glycerol, pH 7.3.
Isotype	IgG
Molecular Weight	Protein Mw: 84kDa Observed Mw: 13kDa
Storage Instruction	Store at -20°C for up to 1 year from the date of receipt, and avoid repeat freeze-thaw cycles.

TARGET INFORMATION

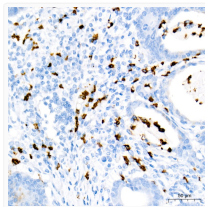
Gene ID	4353
Gene Symbol	MPO
UniProt ID	PERM_HUMAN
Immunogen Region	646-745
Immunogen Sequence	GVSEPLKRRKGRVGPLLACII GTQFRKLRDGRFVWENEGV FSMQQRQALAQISLPRIICD NTGITTVSKNNIFMNSYPR DFNVCSTLPALNLASWREAS
Specificity	A synthetic peptide corresponding to a sequence within amino acids 646-745 of human Myeloperoxidase (MPO) (NP_000241.1).

ADDITIONAL INFORMATION

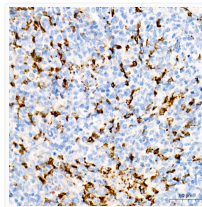
Note STRICTLY FOR FURTHER SCIENTIFIC RESEARCH USE ONLY (RUO). MUST NOT TO BE USED IN DIAGNOSTIC OR THERAPEUTIC APPLICATIONS.



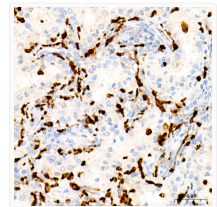
Western blot analysis of extracts of HL-60 cells, using Myeloperoxidase (MPO) antibody (STJ11102741) at 1:500 dilution. Secondary antibody: HRP Goat Anti-rabbit IgG (H+L) (STJS000856) at 1:10000 dilution. Lysates/proteins: 25 Mu g per lane. Blocking buffer: 3% non-fat dry milk in TBST. Detection: ECL Basic Kit. Exposure time: 3s.



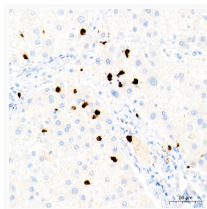
Immunohistochemistry analysis of paraffin-embedded human colon carcinoma using Myeloperoxidase (MPO) rabbit monoclonal antibody (STJ11102741) at dilution of 1:1000 (40x lens). Perform high pressure antigen retrieval with 10 mM Tris/EDTA buffer pH 9.0 before commencing with immunohistochemistry staining protocol.



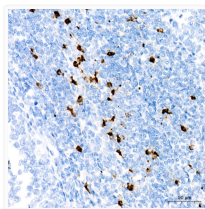
Immunohistochemistry analysis of paraffin-embedded human extranodal NK-T cell lymphoma using Myeloperoxidase (MPO) rabbit monoclonal antibody (STJ11102741) at dilution of 1:1000 (40x lens). Perform high pressure antigen retrieval with 10 mM Tris/EDTA buffer pH 9.0 before commencing with immunohistochemistry staining protocol.



Immunohistochemistry analysis of paraffin-embedded Human hepatocholangiocarcinoma using Myeloperoxidase (MPO) rabbit monoclonal antibody (STJ11102741) at dilution of 1:1000 (40x lens). Perform high pressure antigen retrieval with 10 mM Tris/EDTA buffer pH 9.0 before commencing with immunohistochemistry staining protocol.



Immunohistochemistry analysis of paraffin-embedded human liver using Myeloperoxidase (MPO) rabbit monoclonal antibody (STJ11102741) at dilution of 1:1000 (40x lens). Perform high pressure antigen retrieval with 10 mM Tris/EDTA buffer pH 9.0 before commencing with immunohistochemistry staining protocol.



Immunohistochemistry analysis of paraffin-embedded human tonsil using Myeloperoxidase (MPO) rabbit monoclonal antibody (STJ11102741) at dilution of 1:1000 (40x lens). Perform high pressure antigen retrieval with 10 mM Tris/EDTA buffer pH 9.0 before commencing with immunohistochemistry staining protocol.