

## Anti-S100A8 antibody (1-93) [S0MR] (STJ11102740)

### GENERAL INFORMATION

Product Type	Primary antibodies
Applications	WB/IHC-P/ELISA
Host / Source	Rabbit
Reactivity	Human/Mouse/Rat

### PRODUCT PROPERTIES

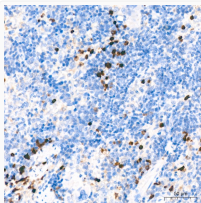
Clonality	Monoclonal
Concentration	Lot specific
Conjugation	Unconjugated
Purification	Affinity purification
Dilution Range	WB:1:1000-1:2000 IHC-P:1:200-1:2000 ELISA:Recommended starting concentration is 1 µg/mL. Please optimize the concentration based on your specific assay requirements.
Formulation	PBS with 0.02% Sodium Azide, 0.05% BSA, 50% Glycerol, pH 7.3.
Isotype	IgG
Molecular Weight	Protein Mw: 11kDa Observed Mw: 10kDa
Storage Instruction	Store at -20°C for up to 1 year from the date of receipt, and avoid repeat freeze-thaw cycles.

### TARGET INFORMATION

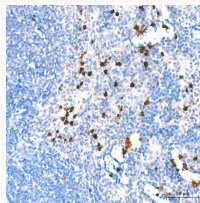
Gene ID	<a href="#">6279</a>
Gene Symbol	<a href="#">S100A8</a>
UniProt ID	<a href="#">S10A8_HUMAN</a>
Immunogen Region	1-93
Immunogen Sequence	MLTELEKALNSIIDVYHKYS LIKGNFHAVYRDDLKKLLET ECPQYIRKKGADVWFKELDI NTDGA VNFQEFLLIVIKMGV AAHKKSHEESHKE
Specificity	A synthetic peptide corresponding to a sequence within amino acids 1-93 of human S100A8 (P05109).

### ADDITIONAL INFORMATION

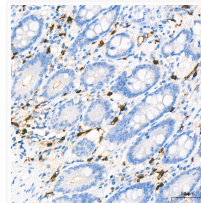
Note **STRICTLY FOR FURTHER SCIENTIFIC RESEARCH USE ONLY (RUO). MUST NOT TO BE USED IN DIAGNOSTIC OR THERAPEUTIC APPLICATIONS.**



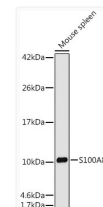
Immunohistochemistry analysis of S100A8 in paraffin-embedded rat spleen tissue using S100A8 Rabbit monoclonal antibody (STJ11102740) at a dilution of 1:200 (40x lens). High pressure antigen retrieval was performed with 0.01 M citrate buffer (pH 6.0) prior to immunohistochemistry staining.



Immunohistochemistry analysis of S100A8 in paraffin-embedded mouse spleen tissue using S100A8 Rabbit monoclonal antibody (STJ11102740) at a dilution of 1:200 (40x lens). High pressure antigen retrieval was performed with 0.01 M citrate buffer (pH 6.0) prior to immunohistochemistry staining.



Immunohistochemistry analysis of S100A8 in paraffin-embedded human colon tissue using S100A8 Rabbit monoclonal antibody (STJ11102740) at a dilution of 1:200 (40x lens). High pressure antigen retrieval was performed with 0.01 M citrate buffer (pH 6.0) prior to immunohistochemistry staining.



Western blot analysis of extracts of Mouse spleen cells, using S100A8 antibody (STJ11102740) at 1:1000 dilution. Secondary antibody: HRP Goat Anti-Rabbit IgG (H+L) (STJS000856) at 1:10000 dilution. Lysates/proteins: 25 µg per lane. Blocking buffer: 3% nonfat dry milk in TBST. Detection: ECL Basic Kit. Exposure time: 180s.