

Anti-RUNX2 antibody (336-439) [S4MR] (STJ11102734)

GENERAL INFORMATION

Product Type	Primary antibodies
Applications	WB/IP/ELISA
Host / Source	Rabbit
Reactivity	Human/Mouse

PRODUCT PROPERTIES

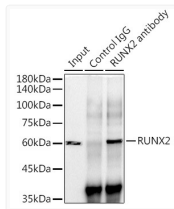
Clonality	Monoclonal
Concentration	Lot specific
Conjugation	Unconjugated
Purification	Affinity purification
Dilution Range	WB:1:500-1:1000 IP:0.5 Mu g-4 Mu g antibody for 400 Mu g-600 Mu g extracts of whole cells ELISA:Recommended starting concentration is 1 Mu g/mL. Please optimize the concentration based on your specific assay requirements.
Formulation	PBS with 0.05% Proclin300, 0.05% BSA, 50% Glycerol, pH7.3.
Isotype	IgG
Molecular Weight	Protein Mw: 57kDa Observed Mw: 60kDa
Storage Instruction	Store at -20°C for up to 1 year from the date of receipt, and avoid repeat freeze-thaw cycles.

TARGET INFORMATION

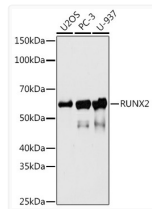
Gene ID	860
Gene Symbol	RUNX2
UniProt ID	RUNX2_HUMAN
Immunogen Region	336-439
Immunogen Sequence	PPRISDDDTATSDFCLWPST LSKKSQAGASELGPFSQPRQ FPSISLSTESRFSNPRMHYP ATFTYTPPVTSGLMSLMSAT THYHTYLPPYPGSSQSQSQG PFQT
Specificity	Recombinant fusion protein containing a sequence corresponding to amino acids 336-439 of human RUNX2 (Q13950).

ADDITIONAL INFORMATION

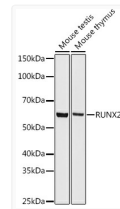
Note STRICTLY FOR FURTHER SCIENTIFIC RESEARCH USE ONLY (RUO). MUST NOT TO BE USED IN DIAGNOSTIC OR THERAPEUTIC APPLICATIONS.



Immunoprecipitation analysis of 300 Mu g extracts of Mouse testis cells using 3 Mu g RUNX2 antibody (STJ11102734). Western blot was performed from the immunoprecipitate using RUNX2 antibody (STJ11102734) at a dilution of 1:500.



Western blot analysis of various lysates using RUNX2 Rabbit monoclonal antibody (STJ11102734) at 1:500 dilution. Secondary antibody: HRP Goat Anti-Rabbit IgG (H+L) (STJS000856) at 1:10000 dilution. Lysates/proteins: 25 Mu g per lane. Blocking buffer: 3% nonfat dry milk in TBST. Detection: ECL Basic Kit. Exposure time: 180s.



Western blot analysis of various lysates using RUNX2 Rabbit monoclonal antibody (STJ11102734) at 1:500 dilution. Secondary antibody: HRP Goat Anti-Rabbit IgG (H+L) (STJS000856) at 1:10000 dilution. Lysates/proteins: 25 Mu g per lane. Blocking buffer: 3% nonfat dry milk in TBST. Detection: ECL Basic Kit. Exposure time: 10s.