

Anti-CACNA1H antibody (1890-2030) (STJ11102728)

GENERAL INFORMATION

Product Type	Primary antibodies
Applications	IF/ICC/ELISA
Host / Source	Rabbit
Reactivity	Mouse

PRODUCT PROPERTIES

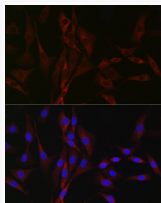
Clonality	Polyclonal
Concentration	Lot specific
Conjugation	Unconjugated
Purification	Affinity purification
Dilution Range	IF/ICC:1:50-1:200 ELISA: Recommended starting concentration is 1 µg/mL. Please optimize the concentration based on your specific assay requirements.
Formulation	PBS with 0.02% Sodium Azide, 50% Glycerol, pH 7.3.
Isotype	IgG
Molecular Weight	Protein Mw: 259kDa Observed Mw: 259kDa
Storage Instruction	Store at -20°C for up to 1 year from the date of receipt, and avoid repeat freeze-thaw cycles.

TARGET INFORMATION

Gene ID	8912
Gene Symbol	CACNA1H
UniProt ID	CAC1H_HUMAN
Immunogen Region	1890-2030
Immunogen Sequence	SARRVDADRPPLPQESPGAR DAPNLVARKVSVSRMLSLPN DSYMFRPVVPASAPHRPLQ EVMETYGAGTPLGSAVSVH SPPAESASLQIPLAVSSPA RSGEPLHALSPRGTARSPSL SRLLCRQEAVHTDSLEGKID S
Specificity	Recombinant fusion protein containing a sequence corresponding to amino acids 1890-2030 of human CACNA1H (NP_066921.2).

ADDITIONAL INFORMATION

Note STRICTLY FOR FURTHER SCIENTIFIC RESEARCH USE ONLY (RUO). MUST NOT TO BE USED IN DIAGNOSTIC OR THERAPEUTIC APPLICATIONS.



Immunofluorescence analysis of NIH/3T3 cells using CACNA1H Rabbit polyclonal antibody (STJ11102728) at dilution of 1:100 (40x lens). Blue: DAPI for nuclear staining.