

## Anti-CD58 antibody (1-100) [S3MR] (STJ11102713)

### GENERAL INFORMATION

Product Type	Primary antibodies
Applications	WB/ELISA
Host / Source	Rabbit
Reactivity	Human

### PRODUCT PROPERTIES

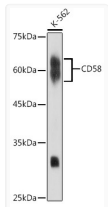
Clonality	Monoclonal
Concentration	Lot specific
Conjugation	Unconjugated
Purification	Affinity purification
Dilution Range	WB:1:500-1:1000 ELISA:Recommended starting concentration is 1 $\mu$ g/mL. Please optimize the concentration based on your specific assay requirements.
Formulation	PBS with 0.02% Sodium Azide, 0.05% BSA, 50% Glycerol, pH 7.3.
Isotype	IgG
Molecular Weight	Protein Mw: 28kDa Observed Mw: 55-70kDa
Storage Instruction	Store at -20°C for up to 1 year from the date of receipt, and avoid repeat freeze-thaw cycles.

### TARGET INFORMATION

Gene ID	<a href="#">965</a>
Gene Symbol	<a href="#">CD58</a>
UniProt ID	<a href="#">LFA3_HUMAN</a>
Immunogen Region	1-100
Immunogen Sequence	MVAGSDAGRALGVLSVVCLL HCFGFISCFSSQIYGVVYGN VTFHVPSNVPLKEVLWKKQK DKVAELENSEFRAFSSFKNR VYLDTVSGSLTIYNLTSSDE
Specificity	A synthetic peptide corresponding to a sequence within amino acids 1-100 of human CD58 (P19256).

### ADDITIONAL INFORMATION

Note STRICTLY FOR FURTHER SCIENTIFIC RESEARCH USE ONLY (RUO). MUST NOT TO BE USED IN DIAGNOSTIC OR THERAPEUTIC APPLICATIONS.



Western blot analysis of extracts of K-562 cells, using CD58 antibody (STJ11102713) at 1:1000 dilution. Secondary antibody: HRP Goat Anti-Rabbit IgG (H+L) (STJS000856) at 1:10000 dilution. Lysates/proteins: 25  $\mu$ g per lane. Blocking buffer: 3% nonfat dry milk in TBST. Detection: ECL Enhanced Kit. Exposure time: 10s.