

Anti-Olig3 antibody (173-272) [S6MR] (STJ11102696)

GENERAL INFORMATION

| | |
|---------------|--------------------|
| Product Type | Primary antibodies |
| Applications | WB/ELISA |
| Host / Source | Rabbit |
| Reactivity | Human |

PRODUCT PROPERTIES

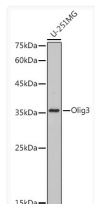
| | |
|---------------------|--|
| Clonality | Monoclonal |
| Concentration | Lot specific |
| Conjugation | Unconjugated |
| Purification | Affinity purification |
| Dilution Range | WB:1:500-1:1000 ELISA:Recommended starting concentration is 1 Mu g/mL. Please optimize the concentration based on your specific assay requirements. |
| Formulation | PBS with 0.02% Sodium Azide, 0.05% BSA, 50% Glycerol, pH 7.3. |
| Isotype | IgG |
| Molecular Weight | Protein Mw: 29kDa Observed Mw: 29kDa |
| Storage Instruction | Store at -20°C for up to 1 year from the date of receipt, and avoid repeat freeze-thaw cycles. |

TARGET INFORMATION

| | |
|--------------------|--|
| Gene ID | 167826 |
| Gene Symbol | OLIG3 |
| UniProt ID | OLIG3_HUMAN |
| Immunogen Region | 173-272 |
| Immunogen Sequence | HAANSVHPVHPILGGALSSG NASSPLSAASLPAIGTIRPP HSLLKAPSTPPALQLGSGFQ HWAGLPCPCTICQMPPPHL SALSTANMARLSAESKDLLK |
| Specificity | A synthetic peptide corresponding to a sequence within amino acids 173-272 of human Olig3 (Q7RTU3). |

ADDITIONAL INFORMATION

Note STRICTLY FOR FURTHER SCIENTIFIC RESEARCH USE ONLY (RUO). MUST NOT TO BE USED IN DIAGNOSTIC OR THERAPEUTIC APPLICATIONS.



Western blot analysis of extracts of U-251 MG cells, using Olig3 antibody (STJ11102696) at 1:1000 dilution. Secondary antibody: HRP Goat Anti-Rabbit IgG (H+L) (STJS000856) at 1:10000 dilution. Lysates/proteins: 25 Mu g per lane. Blocking buffer: 3% nonfat dry milk in TBST. Detection: ECL Basic Kit. Exposure time: 10s.