

Anti-PGD antibody (384-483) [S2MR] (STJ11102692)

GENERAL INFORMATION

Product Type	Primary antibodies
Applications	WB/IF/ICC/IP/ELISA
Host / Source	Rabbit
Reactivity	Human/Mouse/Rat

PRODUCT PROPERTIES

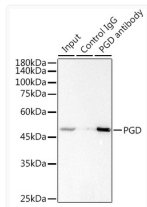
Clonality	Monoclonal
Concentration	Lot specific
Conjugation	Unconjugated
Purification	Affinity purification
Dilution Range	WB:1:500-1:1000 IF/CC:1:50-1:200 IP:0.5 Mu g-4 Mu g antibody for 200 Mu g-400 Mu g extracts of whole cells ELISA:Recommended starting concentration is 1 Mu g/mL. Please optimize the concentration based on your specific assay requirements
Formulation	PBS with 0.02% Sodium Azide, 0.05% BSA, 50% Glycerol, pH 7.3.
Isotype	IgG
Molecular Weight	Protein Mw: 53kDa Observed Mw: 49kDa
Storage Instruction	Store at -20°C for up to 1 year from the date of receipt, and avoid repeat freeze-thaw cycles.

TARGET INFORMATION

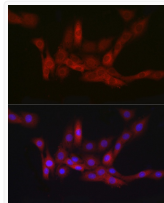
Gene ID	5226
Gene Symbol	PGD
UniProt ID	6PGD_HUMAN
Immunogen Region	384-483
Immunogen Sequence	PELQNLDDFFKSAVENCQ DSWRRVSTGVQAGIPMPCF TTALSFYDGYRHEMLPASLI QAQRDYFGAHTYELLAKPGQ FIHTNWTGHGGTVSSSSYNA
Specificity	A synthetic peptide corresponding to a sequence within amino acids 384-483 of human PGD (P52209).

ADDITIONAL INFORMATION

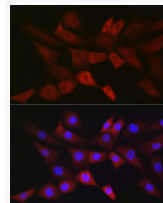
Note STRICTLY FOR FURTHER SCIENTIFIC RESEARCH USE ONLY (RUO). MUST NOT TO BE USED IN DIAGNOSTIC OR THERAPEUTIC APPLICATIONS.



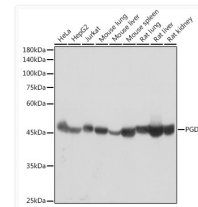
Immunoprecipitation analysis of 300 Mu g extracts of Jurkat cells using 3 Mu g PGD antibody (STJ11102692). Western blot was performed from the immunoprecipitate using PGD antibody (STJ11102692) at a dilution of 1:1000.



Immunofluorescence analysis of PC-12 cells using PGD Rabbit monoclonal antibody (STJ11102692) at dilution of 1:100 (40x lens). Secondary antibody: Cy3 Goat Anti-Rabbit IgG (H+L) at 1:500 dilution. Blue: DAPI for nuclear staining.



Immunofluorescence analysis of NIH/3T3 cells using PGD Rabbit monoclonal antibody (STJ11102692) at dilution of 1:100 (40x lens). Secondary antibody: Cy3 Goat Anti-Rabbit IgG (H+L) at 1:500 dilution. Blue: DAPI for nuclear staining.



Western blot analysis of various lysates using PGD Rabbit monoclonal antibody (STJ11102692) at 1:1000 dilution. Secondary antibody: HRP Goat Anti-Rabbit IgG (H+L) (STJS000856) at 1:10000 dilution. Lysates/proteins: 25 Mu g per lane. Blocking buffer: 3% nonfat dry milk in TBST. Detection: ECL Basic Kit. Exposure time: 5s.