

Anti-UBE2B antibody (53-152) [S8MR] (STJ11102688)

GENERAL INFORMATION

| | |
|---------------|--------------------|
| Product Type | Primary antibodies |
| Applications | WB/IHC-P/ELISA |
| Host / Source | Rabbit |
| Reactivity | Human/Mouse/Rat |

PRODUCT PROPERTIES

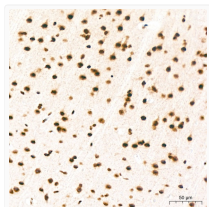
| | |
|---------------------|---|
| Clonality | Monoclonal |
| Concentration | Lot specific |
| Conjugation | Unconjugated |
| Purification | Affinity purification |
| Dilution Range | WB:1:1000-1:6000 IHC-P:1:500-1:5000 ELISA:Recommended starting concentration is 1 Mu g/mL. Please optimize the concentration based on your specific assay requirements. |
| Formulation | PBS with 0.02% Sodium Azide, 0.05% BSA, 50% Glycerol, pH 7.3. |
| Isotype | IgG |
| Molecular Weight | Protein Mw: 17kDa Observed Mw: 17kDa |
| Storage Instruction | Store at -20°C for up to 1 year from the date of receipt, and avoid repeat freeze-thaw cycles. |

TARGET INFORMATION

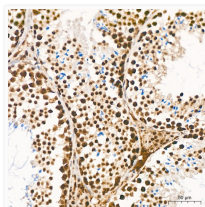
| | |
|--------------------|---|
| Gene ID | 7320 |
| Gene Symbol | UBE2B |
| UniProt ID | UBE2B_HUMAN |
| Immunogen Region | 53-152 |
| Immunogen Sequence | FKLVIEFSEEYPNKPPTVRF LSKMFHPNVYADGSICLDIL QNRWSPTYDVSSILTSIQSL LDEPNPNSPANSQAAQLYQE NKREYEKRVSAIVEQSWNDS |
| Specificity | A synthetic peptide corresponding to a sequence within amino acids 53-152 of human UBE2B (P63146). |

ADDITIONAL INFORMATION

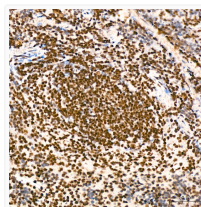
Note STRICTLY FOR FURTHER SCIENTIFIC RESEARCH USE ONLY (RUO). MUST NOT TO BE USED IN DIAGNOSTIC OR THERAPEUTIC APPLICATIONS.



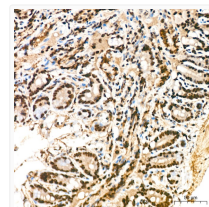
Immunohistochemistry analysis of UBE2B in paraffin-embedded rat brain tissue using UBE2B Rabbit monoclonal antibody (STJ11102688) at a dilution of 1:800 (40x lens). High pressure antigen retrieval was performed with 0.01 M citrate buffer (pH 6.0) prior to immunohistochemistry staining.



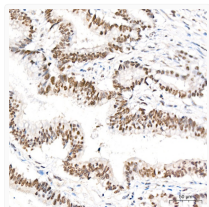
Immunohistochemistry analysis of UBE2B in paraffin-embedded mouse testis tissue using UBE2B Rabbit monoclonal antibody (STJ11102688) at a dilution of 1:800 (40x lens). High pressure antigen retrieval was performed with 0.01 M citrate buffer (pH 6.0) prior to immunohistochemistry staining.



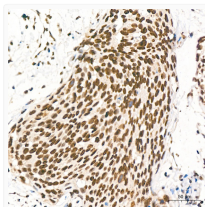
Immunohistochemistry analysis of UBE2B in paraffin-embedded mouse spleen tissue using UBE2B Rabbit monoclonal antibody (STJ11102688) at a dilution of 1:800 (40x lens). High pressure antigen retrieval was performed with 0.01 M citrate buffer (pH 6.0) prior to immunohistochemistry staining.



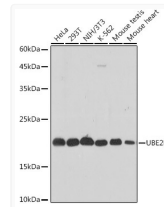
Immunohistochemistry analysis of UBE2B in paraffin-embedded mouse colon tissue using UBE2B Rabbit monoclonal antibody (STJ11102688) at a dilution of 1:800 (40x lens). High pressure antigen retrieval was performed with 0.01 M citrate buffer (pH 6.0) prior to immunohistochemistry staining.



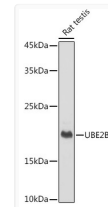
Immunohistochemistry analysis of UBE2B in paraffin-embedded human colon carcinoma tissue using UBE2B Rabbit monoclonal antibody (STJ11102688) at a dilution of 1:800 (40x lens). High pressure antigen retrieval was performed with 0.01 M citrate buffer (pH 6.0) prior to immunohistochemistry staining.



Immunohistochemistry analysis of UBE2B in paraffin-embedded human cervix cancer tissue using UBE2B Rabbit monoclonal antibody (STJ11102688) at a dilution of 1:800 (40x lens). High pressure antigen retrieval was performed with 0.01 M citrate buffer (pH 6.0) prior to immunohistochemistry staining.



Western blot analysis of extracts of various cell lines, using UBE2B antibody (STJ11102688) at 1:1000 dilution. Secondary antibody: HRP Goat Anti-Rabbit IgG (H+L) (STJS000856) at 1:10000 dilution. Lysates/proteins: 25 Mu g per lane. Blocking buffer: 3% nonfat dry milk in TBST. Detection: ECL Basic Kit. Exposure time: 3s.



Western blot analysis of extracts of Rat testis, using UBE2B antibody (STJ11102688) at 1:1000 dilution. Secondary antibody: HRP Goat Anti-Rabbit IgG (H+L) (STJS000856) at 1:10000 dilution. Lysates/proteins: 25 Mu g per lane. Blocking buffer: 3% nonfat dry milk in TBST. Detection: ECL Basic Kit. Exposure time: 1s.