

Anti-MRPL28 antibody (1-100) [S4MR] (STJ11102684)

GENERAL INFORMATION

Product Type	Primary antibodies
Applications	WB/IP/ELISA
Host / Source	Rabbit
Reactivity	Human/Mouse/Rat

PRODUCT PROPERTIES

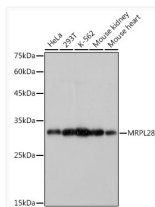
Clonality	Monoclonal
Concentration	Lot specific
Conjugation	Unconjugated
Purification	Affinity purification
Dilution Range	WB:1:500-1:1000 IP:0.5 Mu g-4 Mu g antibody for 200 Mu g-400 Mu g extracts of whole cells ELISA:Recommended starting concentration is 1 Mu g/mL. Please optimize the concentration based on your specific assay requirements.
Formulation	PBS with 0.02% Sodium Azide, 0.05% BSA, 50% Glycerol, pH 7.3.
Isotype	IgG
Molecular Weight	Protein Mw: 30kDa Observed Mw: 30kDa
Storage Instruction	Store at -20°C for up to 1 year from the date of receipt, and avoid repeat freeze-thaw cycles.

TARGET INFORMATION

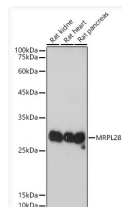
Gene ID	10573
Gene Symbol	MRPL28
UniProt ID	RM28_HUMAN
Immunogen Region	1-100
Immunogen Sequence	MPLHKYPVWLWKRLQLREGI CSRLPGHYLRSLEEERTPTP VHYRPHGAKFKINPKNGQRE RVEDVPIPIYFPPEQRGLW GGEGWILGQIYANNDKLSKR
Specificity	A synthetic peptide corresponding to a sequence within amino acids 1-100 of human MRPL28 (NP_006419.2).

ADDITIONAL INFORMATION

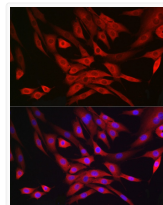
Note STRICTLY FOR FURTHER SCIENTIFIC RESEARCH USE ONLY (RUO). MUST NOT TO BE USED IN DIAGNOSTIC OR THERAPEUTIC APPLICATIONS.



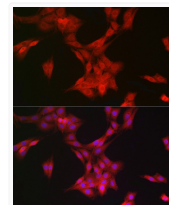
Western blot analysis of extracts of various cell lines, using MRPL28 antibody (STJ11102684) at 1:1000 dilution. Secondary antibody: HRP Goat Anti-rabbit IgG (H+L) (STJS000856) at 1:10000 dilution. Lysates/proteins: 25 Mu g per lane. Blocking buffer: 3% non-fat dry milk in TBST. Detection: ECL Basic Kit. Exposure time: 1s.



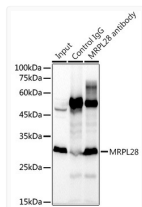
Western blot analysis of extracts of various cell lines, using MRPL28 antibody (STJ11102684) at 1:1000 dilution. Secondary antibody: HRP Goat Anti-rabbit IgG (H+L) (STJS000856) at 1:10000 dilution. Lysates/proteins: 25 Mu g per lane. Blocking buffer: 3% non-fat dry milk in TBST. Detection: ECL Basic Kit. Exposure time: 10s.



Immunofluorescence analysis of NIH/3T3 cells using MRPL28 rabbit monoclonal antibody (STJ11102684) at dilution of 1:100 (40x lens). Blue: DAPI for nuclear staining.



Immunofluorescence analysis of PC-12 cells using MRPL28 rabbit monoclonal antibody (STJ11102684) at dilution of 1:100 (40x lens). Blue: DAPI for nuclear staining.



Immunoprecipitation analysis of 300 Mu g extracts of K-562 cells using 3 Mu g MRPL28 antibody (STJ11102684). Western blot was performed from the immunoprecipitate using MRPL28 antibody (STJ11102684) at a dilution of 1:1000.