

## Anti-EXOSC7 antibody (192-291) [S9MR] (STJ11102679)

### GENERAL INFORMATION

|               |                    |
|---------------|--------------------|
| Product Type  | Primary antibodies |
| Applications  | WB/IHC-P/ELISA     |
| Host / Source | Rabbit             |
| Reactivity    | Human              |

### PRODUCT PROPERTIES

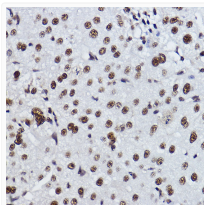
|                     |   |
|---------------------|---|
| Clonality           | Monoclonal  |
| Concentration       | Lot specific  |
| Conjugation         | Unconjugated  |
| Purification        | Affinity purification   |
| Dilution Range      | WB:1:500-1:1000<br>IHC-P:1:50-1:200<br>ELISA:Recommended starting concentration is 1 $\mu$ g/mL. Please optimize the concentration based on your specific assay requirements. |
| Formulation         | PBS with 0.02% Sodium Azide, 0.05% BSA, 50% Glycerol, pH 7.3.   |
| Isotype             | IgG   |
| Molecular Weight    | Protein Mw: 32kDa<br>Observed Mw: 37kDa   |
| Storage Instruction | Store at -20°C for up to 1 year from the date of receipt, and avoid repeat freeze-thaw cycles.  |

### TARGET INFORMATION

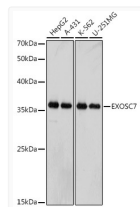
|                    |  |
|--------------------|--|
| Gene ID            | <a href="#">23016</a>  |
| Gene Symbol        | <a href="#">EXOSC7</a>   |
| UniProt ID         | <a href="#">EXOS7_HUMAN</a>  |
| Immunogen Region   | 192-291  |
| Immunogen Sequence | LSVENVPCIVTLCKIGYRHV VDATLQEEACSLASLLVSVT SKGVVTCMRKVGKGSGLDPES<br>IFEMMETGKRVGKVLHASLQ SVVHKEESLGPKRQKVGFLG |
| Specificity        | A synthetic peptide corresponding to a sequence within amino acids 192-291 of human EXOSC7 (Q15024).         |

### ADDITIONAL INFORMATION

Note **STRICTLY FOR FURTHER SCIENTIFIC RESEARCH USE ONLY (RUO). MUST NOT TO BE USED IN DIAGNOSTIC OR THERAPEUTIC APPLICATIONS.**



Immunohistochemistry analysis of paraffin-embedded human liver cancer using EXOSC7 Rabbit monoclonal antibody (STJ11102679) at dilution of 1:100 (40x lens). Perform high pressure antigen retrieval with 10 mM citrate buffer pH 6.0 before commencing with immunohistochemistry staining protocol.



Western blot analysis of various lysates, using EXOSC7 antibody (STJ11102679) at 1:1000 dilution. Secondary antibody: HRP Goat Anti-Rabbit IgG (H+L) (STJS000856) at 1:100000 dilution. Lysates/proteins: 25  $\mu$ g per lane. Blocking buffer: 3% nonfat dry milk in TBST. Detection: ECL Basic Kit. Exposure time: 10s.